



**Meet the
Oak Hill Parkway Team**

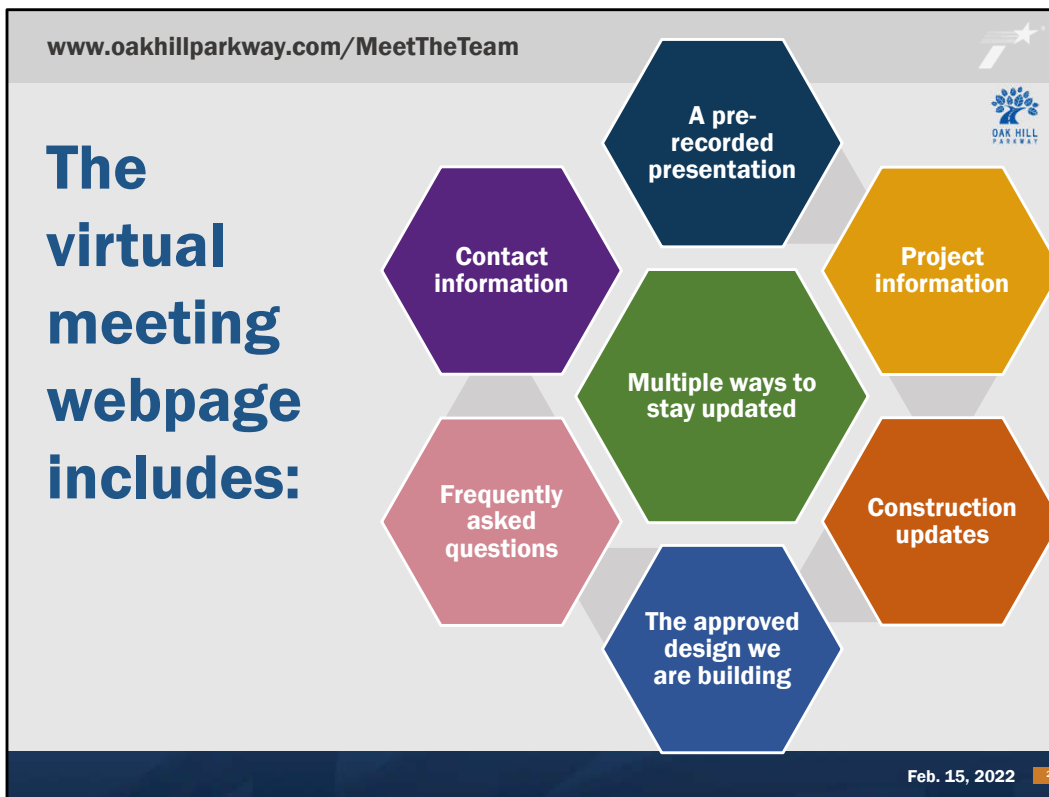
Virtual Meeting | February 15, 2022

Meet the Oak Hill Parkway Team Feb. 15, 2022

Hello and thank you for joining us for this virtual update on the Oak Hill Parkway project. This meeting is hosted by the Texas Department of Transportation Austin District. We appreciate your interest.

This pre-recorded presentation is approximately 15 minutes long and will give you a brief overview of the project and upcoming construction activities.

For more information, please visit us online at OakHillParkway.com.



On our virtual meeting webpage, you can find the following:

- Multiple ways to stay updated on the project,
- This pre-recorded presentation,
- Project information,
- Construction updates,
- The approved design we are building,
- Frequently asked questions – many of which were submitted in advance of this meeting, thank you!
- And ways to contact the team.

A pdf download of this presentation and transcript is also available on the webpage.

Who is the team building Oak Hill Parkway?

OWNER
Texas Department of Transportation

DESIGN-BUILD CONTRACTOR
COLORADO RIVER CONSTRUCTORS
Fluor-Balfour Beatty

GENERAL ENGINEERING CONSULTANT
ATKINS
Member of the SNC-Lavalin Group

OWNER VERIFICATION TESTING AND INSPECTION
ATLAS

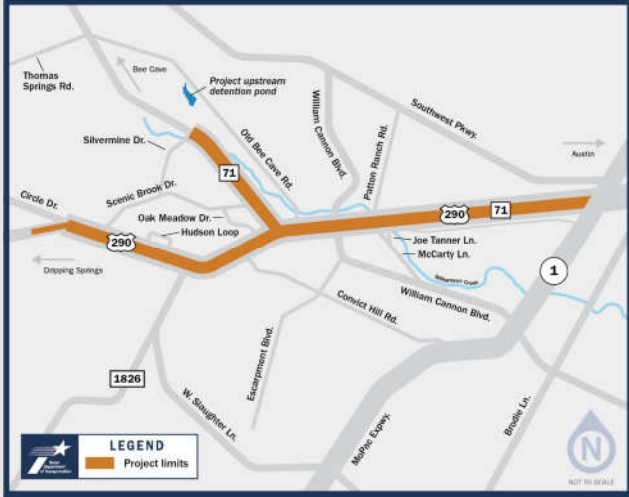
Feb. 15, 2022 3

So, who is the team building Oak Hill Parkway?

- The project owner is the Texas Department of Transportation, or TxDOT.
 - The TxDOT Austin District is directing all efforts to get this project built and open to traffic by 2026.
 - Serving as TxDOT's consultants are the firms Atkins and Atlas. These two firms provide oversight to ensure the project is built to TxDOT's high quality standards and that it is in environmental compliance.
- The design/build contractor is the Colorado River Constructors, or CRC.
 - CRC is a joint venture of the firms Fluor and Balfour Beatty. These two firms have built several similar projects across the state including 183 South and SH 130 in east Austin.
 - CRC is served by a number of consultants and subcontractors that help them perform the work and fulfill their contract with the state.

On behalf of the entire team, we thank you for your patience as we work as quickly and as safely as possible to build the project.

Where is Oak Hill Parkway located?



PROJECT LIMITS:

US 290
From MoPac
to Circle Drive

SH 71
From US 290 to
Silvermine Drive

LENGTH: Approximately **7 miles**


LOCATION: **Austin, Travis County**

Feb. 15, 2022

Now for a brief overview about the project itself.

The Oak Hill Parkway spans along US 290 from MoPac westward to Circle Drive and South View Road. We also spur up SH 71 from US 290 to Silvermine Drive. The total length is approximately 7 miles.

What is the history of Oak Hill Parkway?



The intersection of US 290 and SH 71 has long been identified as a heavily congested intersection in need of solutions and is listed in the **100 Most Congested Roadways in Texas** (Texas A&M Transportation Institute, 2021)


1988	Original environmental clearance
1990s-2000s	Various iterations of the project were considered
2012	Environmental Impact Statement launched
2014-2015	Interim intersection improvements open to traffic
2018	Recent environmental clearance
2020	Design-Build contract awarded
2021	Construction begins

Feb. 15, 2022 5

Oak Hill Parkway has a lengthy history.

- The intersection of US 290 and SH 71 has long been identified as a congested area in need of solutions.
- Back in the 80s, a version of the project was approved for construction, but then put on hold.
- Since then, various iterations of the project were considered, until TxDOT launched the most recent environmental study in 2012. During that study, we had extensive outreach with the community, and we thank everyone for their interest and participation. All of that effort resulted in the design that was approved in 2018.
- In 2020, the contract was awarded to CRC and we began preconstruction activities.
- In July 2021, we held a groundbreaking and construction formally began.

Is Oak Hill Parkway fully funded?




**Oak Hill Parkway
is fully funded as
a non-tolled project**


Feb. 15, 2022 6

We do want to take the time to note that Oak Hill Parkway is fully funded and it is fully funded as a non-tolled project.

What is TxDOT building?



- 6 miles of roadway improvements along US 290
- 1.2 miles of roadway improvements along SH 71
- Full reconstruction of the US 290/SH 71 “Y” interchange to include two new flyovers
- New cross street configurations of US 290 at Convict Hill Rd, RM 1826, Scenic Brook Dr, and Circle Dr/South View Rd
- 14 miles of shared-use path and 1.5 miles of sidewalks



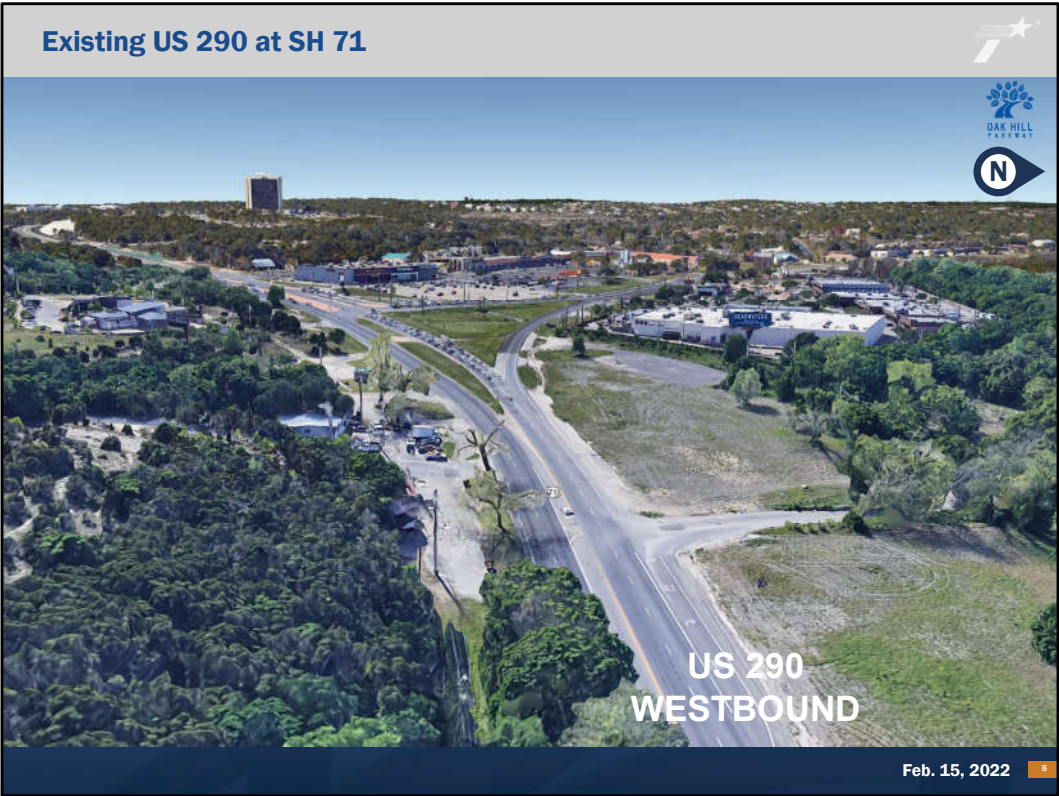
Feb. 15, 2022 7

So, what are we building?

- The Oak Hill Parkway project includes the widening of six miles of US 290 and about one mile of improvements along SH 71.
- This widening consists of 2-to-3 non-stop US 290 mainlanes in each direction, as well as 2-to-3 frontage road lanes in each direction.
- One significant component is the full reconstruction of the US 290/SH 71 interchange, or the “Y” at Oak Hill. This intersection will include two new flyovers and the US 290 mainlanes will be rebuilt lower than ground level.
- The project also includes brand new cross street configurations west of the “Y.” The cross streets are Convict Hill Road, RM 1826, Scenic Brook Drive, and Circle Drive, and they will be rebuilt as bridges over the US 290 mainlanes. To clarify, the cross streets will be at ground level with the US 290 mainlanes lowered underneath.
- In addition, we are building about 15 miles of new paths for those who are on bike or on foot.

The project design is available online to look at in more detail. If you have a specific question about the design or the route you would take when the project is complete, please let us know. We are happy to assist you.

PRESENTATION AND SCRIPT



Here is a photo of the “Y” taken in 2018. Please note that north is to your right and you can see the ACC Pinnacle Campus building in the distance.

PRESENTATION AND SCRIPT



And now you see a rendering of what the project could look like when finished. You can see its transformative nature for the area as we move the through traffic onto the mainlanes and have local traffic on the frontage roads. We look forward to the mobility and safety improvements this project will bring.

PRESENTATION AND SCRIPT

JULY 2021
Groundbreaking

Construction

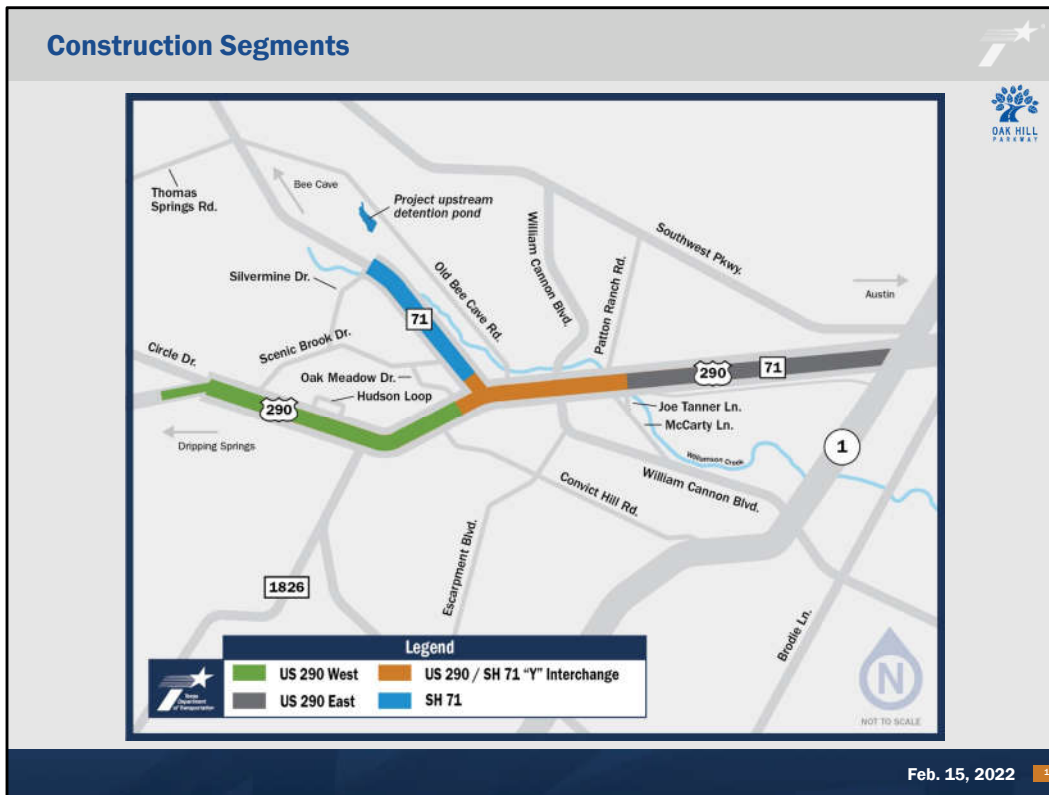
2026
Anticipated Completion

Where we've been
and where we're headed

OAK HILL
PARKWAY

Feb. 15, 2022 10

Now let's get into the construction. The project formally began with a groundbreaking in July 2021 and we anticipate completion in 2026.



The contractor has divided the project into four segments.

The green segment, US 290 West, stretches along US 290 from west of Circle Drive to just east of Convict Hill Road. This segment is currently seeing significant construction and will feature those new cross street bridges.

The center section, noted in orange, is where work will occur at the intersection of US 290 and SH 71 as well as US 290 and William Cannon Drive. This will include multiple bridges and will be one of the more complicated areas for construction sequencing. Significant activity in this section will begin later this year.

The dark grey segment, named US 290 East, stretches along US 290 from approximately Joe Tanner Lane to MoPac. Construction is also ongoing in this segment as we work to tie in the existing highway segment west of MoPac to seamlessly fit into the new improvements. A feature of this area is the addition of improvements to bicycle and pedestrian accommodations.

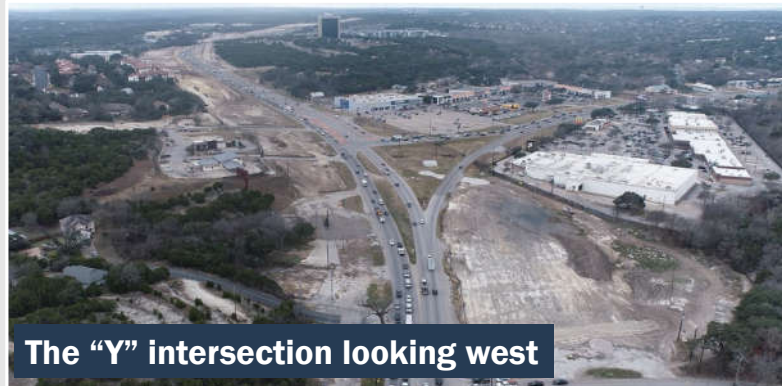
Finally, the blue segment, or SH 71, is the area along SH 71 that we will be widening and connecting to the new flyover configuration at the "Y." Major activity in this segment will begin later this year.

How will the project be sequenced?



▪ **“Outside in” approach**

- Build frontage roads first
- Move traffic to new frontage roads while mainlanes and bridges are built



The “Y” intersection looking west

Feb. 15, 2022 12

We are often asked how the construction will be sequenced. A project of this size and complexity does mean that sequencing will be complicated, so we appreciate your patience.

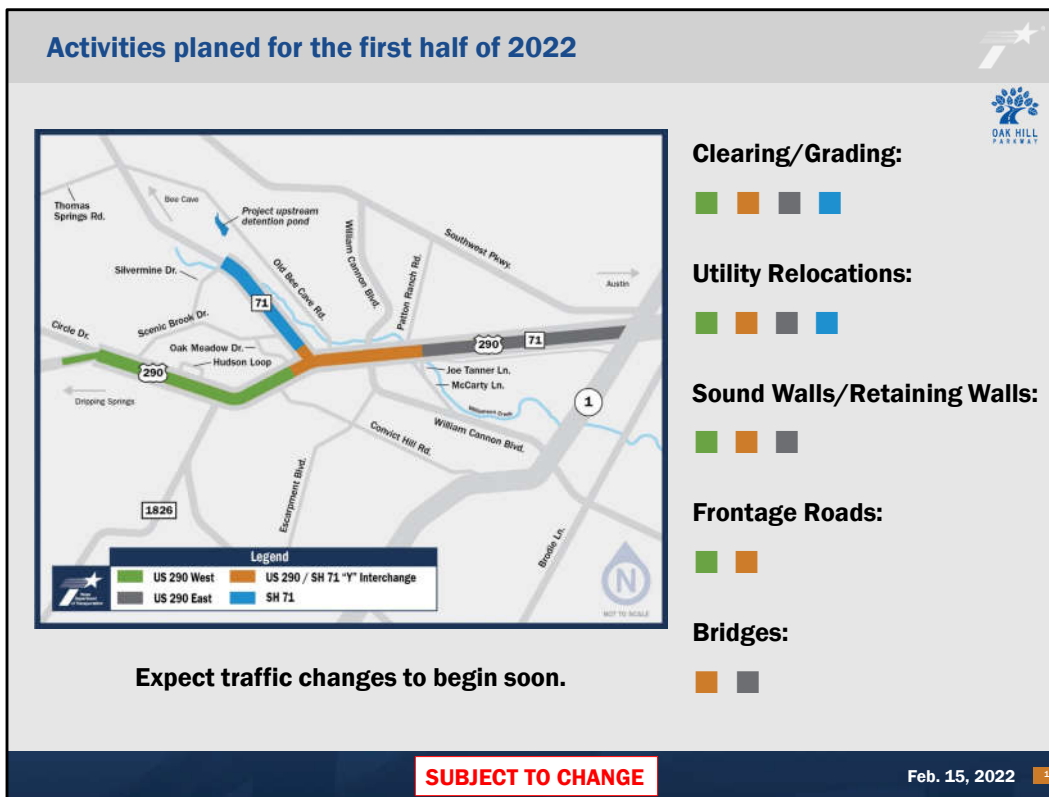
TxDOT is using an “outside in” approach. Generally speaking, we are prioritizing frontage road construction and then the construction of mainlanes and bridges.

For example, once the frontage roads are ready, traffic will be moved from the existing US 290 to the new frontage road pavement so that our team can work safely in the middle. For most of the segments, that shift to the new frontage roads will occur in 2023 and 2024, weather permitting.

In that timeframe will be some of the more complicated lane shifts and detours at the “Y” interchange and at William Cannon Drive.

The construction sequencing, and in some cases access, in front of businesses and neighborhoods will vary through the next four years. To receive more specific information about what is happening in front of your business, neighborhood, or area of interest, please contact us!

Exact timing, maps, and additional information to help you navigate the corridor will be developed as the project progresses and announced through our various communication channels. We urge you to sign up for updates on OakHillParkway.com so you never miss a beat.



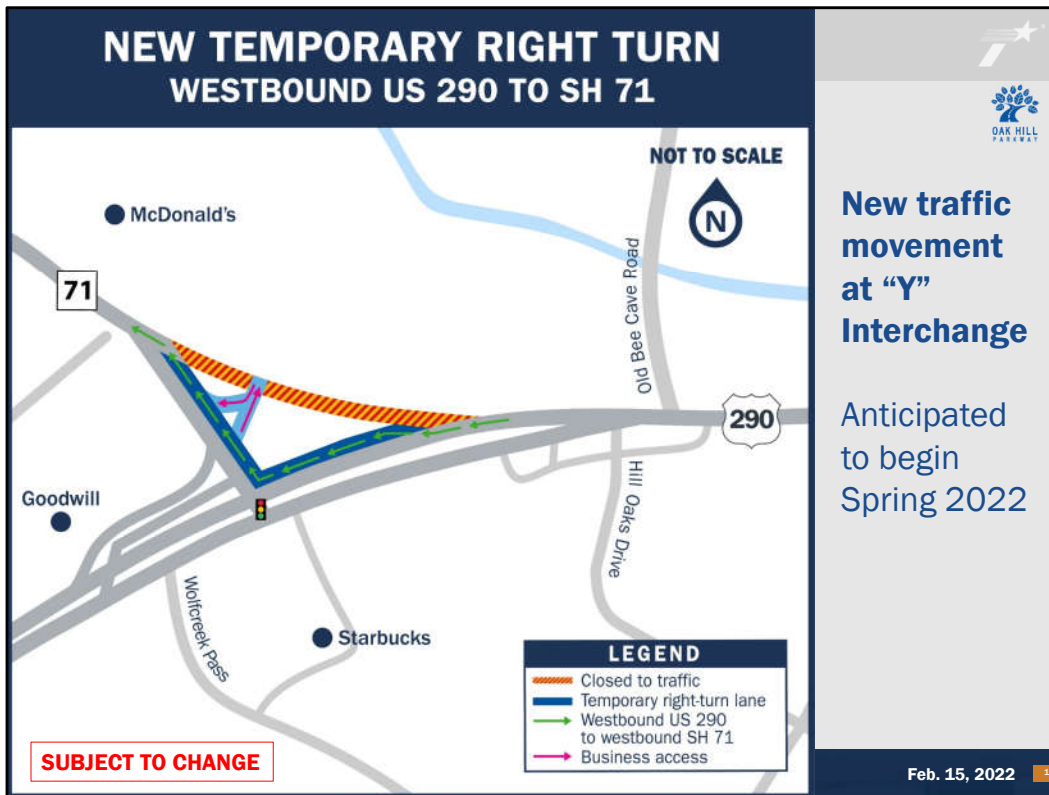
Let's look at what's happening in the corridor this first half of 2022.

Throughout the corridor, you will see our team continue to clear and grade the state right of way in preparation for the roadway improvements. In addition, our utility partners are working to make utility relocations in advance of the new pavement.

Specific to just our work on US 290, you'll see crews work on the three sound walls approved for the project as well as a number of retaining walls, which are vertical walls along the roadway that is constructed to hold back soil.

The west and central segments will see frontage road construction, while the central and east segments will see bridge work.

Please expect traffic changes to begin in 2022, and let's start with talking about the one coming up this spring.



We anticipate in the spring timeframe, that there will be a traffic shift at the "Y" interchange for those on westbound US 290 making a right turn onto westbound SH 71. The same number of lanes will remain open; however, the location of the right turn will be moved to new pavement to make room for construction activities.

You can view this graphic on your screen and in a download available on the virtual meeting webpage.

Projected road closures and detours		
2022	McCarty Ln at US 290 (1 year)	Drivers will be detoured to Joe Tanner Ln for access to/from US 290.
	Cross-street closure of Circle Dr/ South View Rd (2 years)	Drivers will be detoured to US 290 frontage roads to access temporary intersection near Thunderbird Rd.
2023-2024	Old Bee Caves Rd at US 290 (6 months)	Drivers will be detoured to SH 71/Fletcher Ln for access to/from Old Bee Caves Rd.
	Joe Tanner Ln at US 290 (6 months)	Drivers will be detoured to McCarty Ln for access to/from US 290.
	Cross-street closures of Scenic Brook Dr, RM 1826 & Convict Hill Rd at US 290 (6 months each)	Drivers will be detoured to US 290 frontage roads to access temporary turnarounds or the next available intersection.
2024-2025	Patton Ranch Rd Southbound at US 290 (1 year)	Drivers will be detoured to School Rd and Parkwood Dr to access US 290. Northbound access from US 290 will remain.
	Full Closure of Patton Ranch Rd at US 290 (3 months in summer)	Drivers will be detoured to William Cannon Dr/Vega Ave for access to/from US 290.

SUBJECT TO CHANGE

Feb. 15, 2022

We also have several projected road closures and detours for the project that are listed on the screen and are in a download available on the virtual meeting webpage.

Some of these include temporary road closures of connecting streets at their intersection with US 290, and some include temporary closures of cross streets, such as Scenic Brook Drive, where drivers will be detoured to either a temporary turnaround or the next available intersection.

For example, the temporary cross street closure of Circle Drive and South View Road at US 290 will occur later this year and last for approximately two years. Drivers will be detoured to a temporary and fully signalized intersection near Thunderbird Road. More information on this shift is coming soon.

We also want to note that the temporary cross street closures of roads in close proximity, such as RM 1826 and Convict Hill Road, will not be concurrent.

We will have advance notice of each of these impacts closer to the time in which they will occur, including public friendly maps of the detours. Please remember to sign up for updates.

What should the community expect?

Construction projects can be disruptive, and we will do our best to be a good neighbor.

WHAT TO EXPECT:

Travel delays	Lane shifts, closures and detours
Construction noise, dust and lighting	Night work
Business access adjustments	Shifts in the schedule of activities

Feb. 15, 2022 16

We also want to touch on what the community should expect as we all navigate construction together over the next four years.

Construction projects can be disruptive, and we will do our best to be a good neighbor. Here are the elements to expect:

- Travel delays, mostly due to lane shifts, closures, and detours
- Many of you have already experienced disruptions like construction noise, dust, and lighting; lights especially during night work.
- You may also see some adjustments to business access, and you'll likely see shifts in scheduled activities from time to time

Again, we thank you for your patience.

Construction timeframes



Rock Trencher

- Expect construction activities to take place during the day, at night and on the weekends for about four years.
- **Nighttime lane closures** on US 290 and SH 71 will generally take place between 9 p.m. and 5 a.m.
- Daytime and nighttime lane closures on **local connecting streets** may also occur.

SUBJECT TO CHANGE

Feb. 15, 2022 17


Speaking of schedules, we wanted to note construction timeframes.

Expect construction activities to take place during the day, at night and on the weekends for about four years. This reduces the project schedule to a shorter duration, and the nightwork allows for less daytime traffic impacts.


It will be very infrequent to see daytime closures of lanes on US 290 or SH 71. It is our goal that during the daytime hours, there will always be two lanes open in each direction on these two highways.

However, you will experience nighttime lane closures on US 290 and SH 71 and they will generally take place between the hours of 9 p.m. and 5 a.m.

Also, you will see both daytime AND nighttime lane closures on local connecting streets, such as William Cannon Drive.

Stay informed 

- **VISIT** OakHillParkway.com
- **SIGN UP FOR UPDATES**
 - Weekly Lane Closure E-Blasts
 - Quarterly E-Newsletters
- **REQUEST A PRESENTATION**
- **FOLLOW** @OakHillParkway
- **CONTACT US** at 512-342-3344 or at www.oakhillparkway.com/contact

Feb. 15, 2022 

We urge you stay informed as we work to build this critical project.

Visit us online at OakHillParkway.com. Here you can find the latest information about the project, construction alerts, and other resources.

There are two options to sign up for updates.

- We send out a weekly lane closure e-blast every Friday afternoon that includes the lane closures for the following week and any key construction alert of interest.
- And quarterly, we send an e-newsletter that has additional project information and updates.

You are always welcome to request a presentation or update for your group, neighborhood, or business. Please give us a call and we can set something up.

Follow us on twitter at @OakHillParkway for construction updates.

And of course, please contact us with your questions. Our hotline number is 512-342-3344 and we have an online contact form. Messages we receive on these two methods are sent to the entire outreach team so we can work promptly to get you a timely response.

The image is a slide from a presentation. It features an aerial rendering of a complex multi-level highway interchange with several overpasses and ramps. The scene includes green grassy areas, some buildings, and a clear sky. In the top right corner, there is a small logo with a star and the text 'OAK HILL PARKWAY'. In the bottom right corner, there is a small orange square with the number '19'. Overlaid on the center of the image is the text 'Thank you!' in a large, white, sans-serif font. To the left of this text is the Oak Hill Parkway logo, which consists of a stylized blue tree with leaves and a road curving through them, with the words 'OAK HILL PARKWAY' written in blue below it. At the bottom of the slide, there is a dark blue horizontal bar containing three items: a website icon followed by 'www.oakhillparkway.com', a Twitter icon followed by 'Twitter: @oakhillparkway', and a telephone icon followed by 'Project Hotline: 512-342-3344'.

We appreciate your interest and encourage you to stay engaged. Thank you.