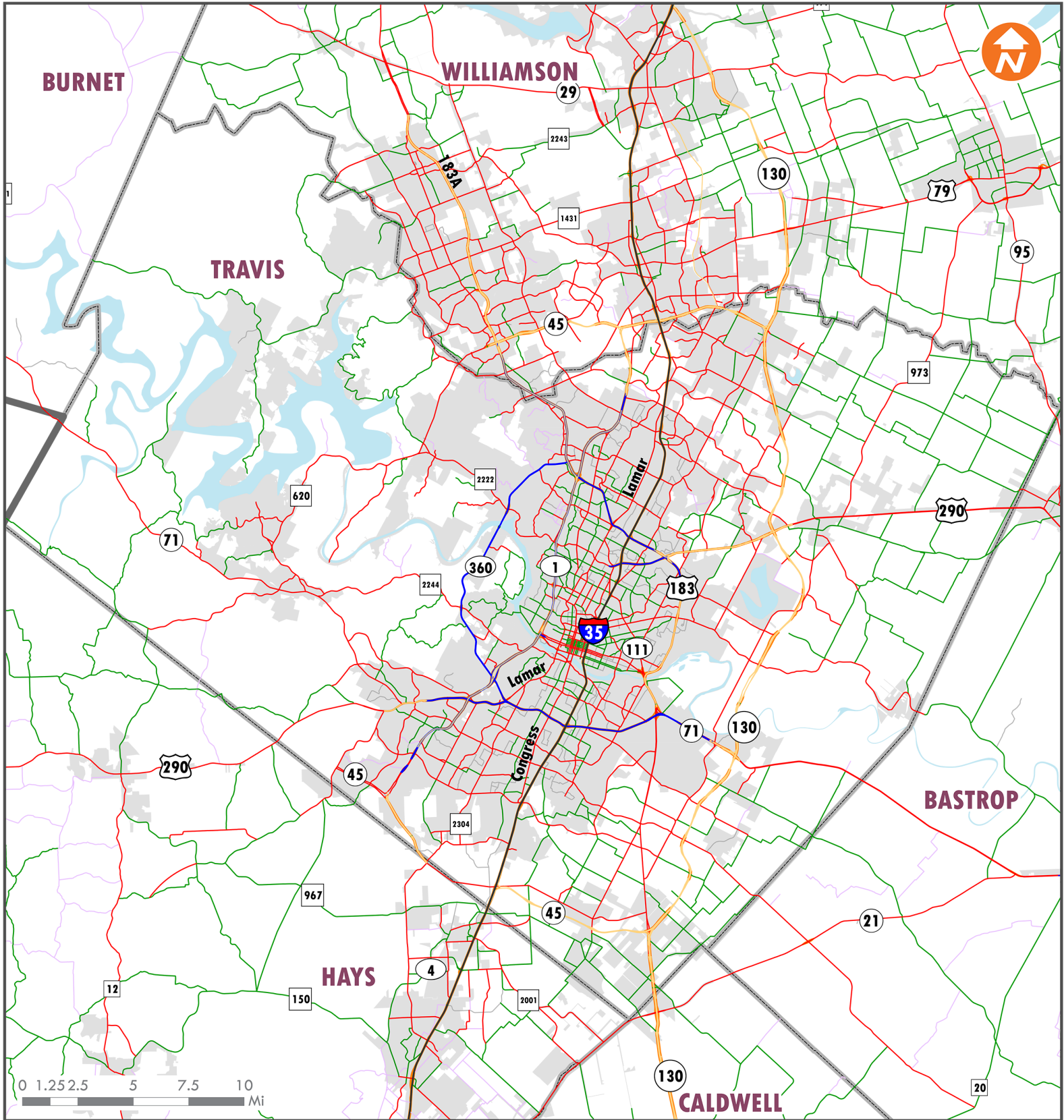


## CAMPO 2040 Regional Transportation Plan

# Road Types 2040

Travis County  
Date: 4/7/2015



This map was developed by CAMPO for the purpose of aiding in regional transportation planning decisions and is not warranted for any other use. CAMPO makes no guarantee regarding its accuracy or completeness. If you would like to receive the GIS layers found on this map send your request to: [campo@campotexas.org](mailto:campo@campotexas.org).  
Data Source: CAMPO

## Road Type

- |                      |                                  |
|----------------------|----------------------------------|
| — Interstate         | — Minor Arterial                 |
| — Freeway/Expressway | — Collector                      |
| — Tolled             | — Local                          |
| — Principal Arterial | — Ramp/Frontage/Direct Connector |
|                      | ■ City Limits                    |

**Table 32: Road Projects**

This is the list of road projects in the fiscally constrained portion of the CAMPO 2040 Regional Transportation Plan. These projects are expected to be funded between 2015 and 2040, with local and regional (state and federal) funds, as noted.

ID	Sponsor	Cosponsor	County	Project	Limits/Location	Description	Let Year	YOE Cost (Millions)	Funding Source
81	TxDOT		Hays	IH 35 - Hays County	SH 45 SE - Posey Road	IH 35 Improvement Projects	2020	\$1,500.0	Regional
82	TxDOT		Travis	IH 35 - Travis County	SH 45 N - SH 45 SE	IH 35 Improvement Projects	2020	\$1,940.0	Regional
83	TxDOT		Williamson	IH 35 - Williamson County	SH 45 N - SH 195 N	IH 35 Improvement Projects	2020	\$815.0	Regional
84	Buda		Hays	IH 35 / OSR Connector	Old San Antonio Rd - IH 35	New 2-lane undivided	2018	\$0.1	Local
89	Round Rock		Williamson	US 79	IH 35 - A. W. Grimes Boulevard	Reconstruct to a 6 lane divided roadway with sidewalks	2030	\$14.4	Regional
90	Williamson		Williamson	US 183 N	FM 970 - FM 3405	Widen from 4 lanes to 4 lanes with median (future frontage roads)	2018	\$17.1	Local
91	Williamson		Williamson	US 183 N	FM 3405 - SH 29	Widen from 4 lanes to 4 lanes with median (future frontage roads)	2018	\$40.9	Local
92	CTRMA		Travis	US 183 N	Loop 1 N - RM 620	2 Express Lanes in each direction	2019	\$225.7	Regional
93	CTRMA	TxDOT	Travis	US 183 S	US 290 - Boggy Creek	Completion of environmental document, traffic and revenue studies, final engineering, ROW acquisition, utility relocation and construction for 6 tolled mainlanes and 4 to 6 continuous, non-tolled access road lanes, project may be phased.	2016	\$332.3	Regional
94	CTRMA	TxDOT	Travis	US 183 S	Boggy Creek - SH 71	Completion of environmental document, traffic and revenue studies, final engineering, ROW acquisition, utility relocation and construction for 6 tolled mainlanes and 4 to 6 continuous, non-tolled access road lanes and operational improvements on SH 71.	2018	\$319.7	Regional
95	TxDOT		Bastrop	US 290 E Hurricane Evacuation Route	1 mile east of FM 696 - Lee County Line	Reconstruct existing 4-lane undivided rural principal arterial to a 4 lane divided rural principal arterial.	2018	\$57.1	Regional
96	CTRMA	TxDOT	Travis	US 290 W	West of RM 1826 - Loop 1	Construct 6-lane tolled turnpike with frontage roads	2018	\$529.0	Regional
97	Hays		Hays	US 290 W	Blanco County Line - RM 165	MAD-4	2030	\$25.9	Local
98	Hays		Hays	US 290 W	RM 165 - NF 2	MAD-4	2030	\$25.9	Local
99	Hays		Hays	US 290 W	RM 12 - Nutty Brown Rd	MAD-6	2035	\$21.8	Local
100	Travis		Travis	US 290 W	RM 1826 - Nutty Brown Rd	Widen to MAD-6	2040	\$17.5	Regional

## Road Projects (continued)

ID	Sponsor	Cosponsor	County	Project	Limits/Location	Description	Let Year	YOE Cost (Millions)	Funding Source
102	CTRMA		Travis	Loop 1	Cesar Chavez - Slaughter	2 Express Lanes in each direction - MoPac South*	2020	\$352.8	Regional
103	San Marcos		Hays	Loop 82	LBJ Dr - IH 35 (Two way)	MAD-4	2035	\$1.2	Local
104	San Marcos		Hays	Loop 82 (Phase 1)	Guadalupe St/Grove St - LBJ Dr (One way)	MAD-4	2035	\$0.2	Local
105	San Marcos		Hays	Loop 82 / Aquarena Springs Dr	IH 35 - Sessom Dr	MAD-4	2035	\$5.1	Local
106	San Marcos		Hays	Loop 82 / Guadalupe	University Dr - Grove St (One way SB)	MAD-4	2035	\$3.8	Local
107	San Marcos		Hays	Loop 82 / LBJ	University Dr - Grove St (One way NB)	MAD-4	2035	\$2.4	Local
108	San Marcos		Hays	Loop 82 / University Dr	Sessom Dr - Guadalupe St	MAD-4	2035	\$2.0	Local
109	Bastrop County		Bastrop	SH 21	SH 71 - Caldwell County Line	Construct MAD-4 or Super 2	2023	\$185.9	Local
110	Caldwell		Caldwell	SH 21	Hays County Line - SH 130	Widen to 4 lanes	2025	\$14.9	Local
111	Hays		Hays	SH 21	Caldwell County Line - CR 159 (Yarrington)	MAD-6	2030	\$32.2	Local
112	Hays		Hays	SH 21	CR 159 (Yarrington) - SH 80	MAD-6	2030	\$12.5	Local
113	San Marcos		Hays	SH 21 Extension	SH 80 - IH 35 at Posey Rd	MAD-4	2035	\$24.4	Local
114	CTRMA	TxDOT	Hays / Travis	SH 45 SW	Loop 1 S - FM 1626	Construction of a 4-lane tolled freeway (Project may be phased); shared use path where feasible	2015	\$108.1	Regional
115	Hays	Buda	Travis / Hays	SH 45 SW-E	FM 1626 - IH 35 S	Environmental and preliminary engineering analysis for a new freeway (Design only)	2025	\$2.9	Local
116	TxDOT		Bastrop	SH 71	west of Colorado River - east of Loop 150 E	Construct 4-lane freeway with 3-lane frontage roads	2015	\$45.4	Regional
120	CTRMA	TxDOT	Travis	SH 71 W	Silvermine Dr. to US 290	Construct tolled lanes and frontage road	2018	\$200.0	Regional
122	Caldwell		Caldwell	SH 80	FM 1979 - SH 130	Widen to 4 lanes	2025	\$55.9	Local
123	Hays		Hays	SH 80	SH 21 - Caldwell County Line	MAD-6	2030	\$2.1	Local
124	Caldwell		Caldwell	SH 80	County Line Road - FM 1979	Widen to 6 lanes with raised median	2035	\$100.4	Regional
125	San Marcos		Hays	SH 80	IH 35 - SH 21	MAD-4	2035	\$3.6	Local
126	San Marcos		Hays	SH 80 / E Hopkins	Moore St - Loop 82	MAD-4	2035	\$1.2	Local
127	San Marcos		Hays	SH 80 / E Hopkins	Loop 82 - CM Allen	MAD-4	2035	\$0.5	Local
128	San Marcos		Hays	SH 80 / E Hopkins	CM Allen - IH 35	MAD-4	2035	\$3.8	Local

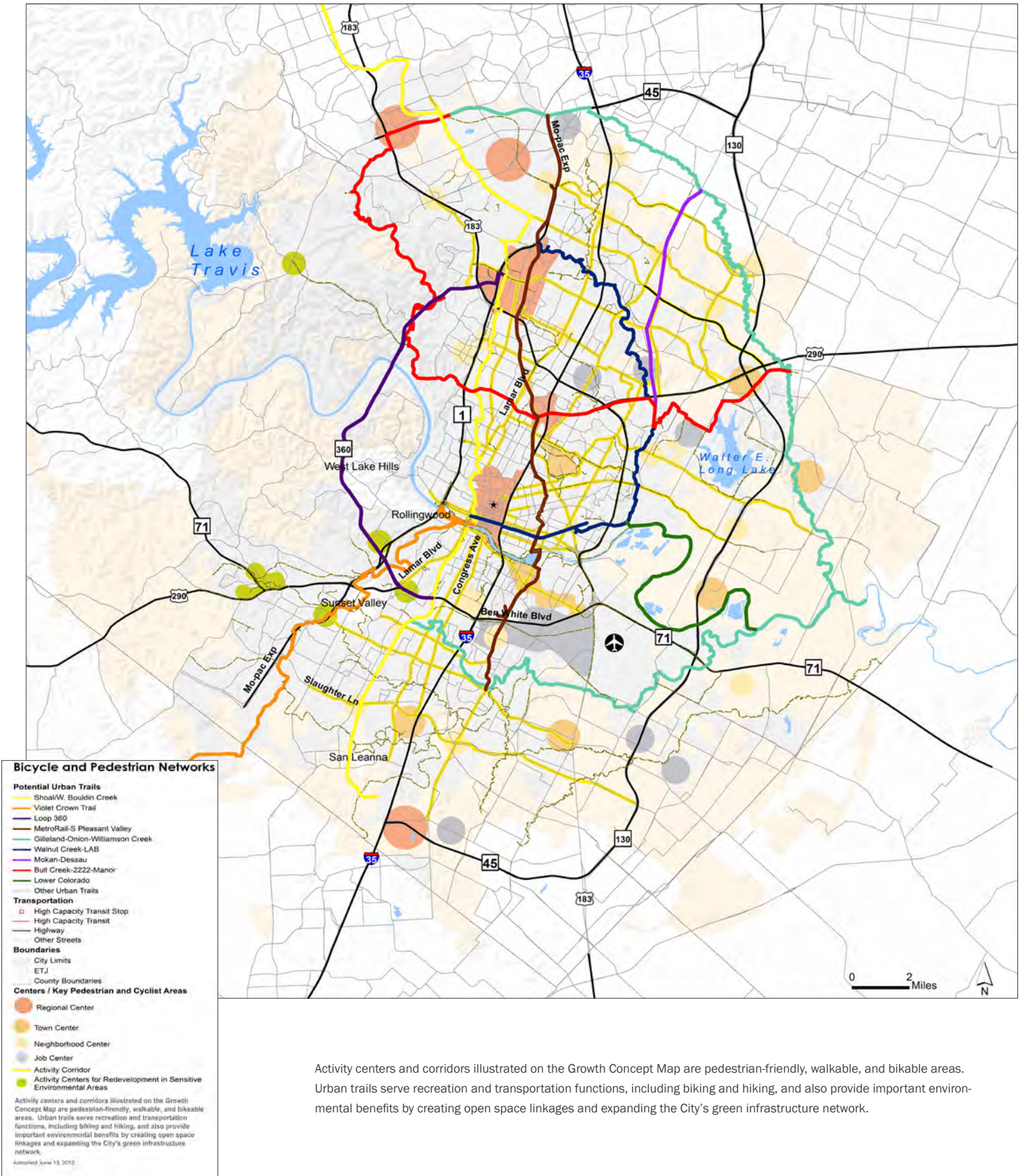
\*Study all options for the proposed MoPac South expansion including both 1 and 2 Express Lanes in each direction, as well as no-build.

**FY 2017-2020 Transportation Improvement Program (TIP)  
Appendix E - Projects Undergoing Environmental Assessment**

District	Project Sponsor	Project Name	Project County	Project City	Limits		Project Description
					From	To	
Austin	TxDOT	IH 35	Williamson, Travis, Hays	Various	SH 130	Posey Road	Study for various operational improvements on mainlanes and frontage roads, plus potential future transportation corridor (added capacity)
Austin	CTRMA/ TxDOT	US 183 N	Williamson, Travis	Austin	Loop 1 N	SH 45/ RM 620	2 Express Lanes in each direction; an additional fourth general purpose lane
Austin	CTRMA/ TxDOT	Loop 1 S	Travis	Austin	Cesar Chavez	Slaughter Ln	2 Express Lanes in each direction*
Austin	TxDOT	FM 2304	Travis	Austin	RAVENSCROFT	FM 1626	RECONSTRUCT 5 LANE URBAN ROADWAY
Austin	CTRMA/ TxDOT	US 290 W	Travis	Austin	Loop 1 S	W of FM 1826	Tollway with frontage roads
		SH 71			US 290 W	Silvermine Drive	
Austin/San Antonio	Lone Star Rail District	Lone Star Regional Rail Project	Williamson, Travis, Hays, Bastrop, Caldwell	Various	Georgetown	Guadalupe County Line	Regional passenger rail

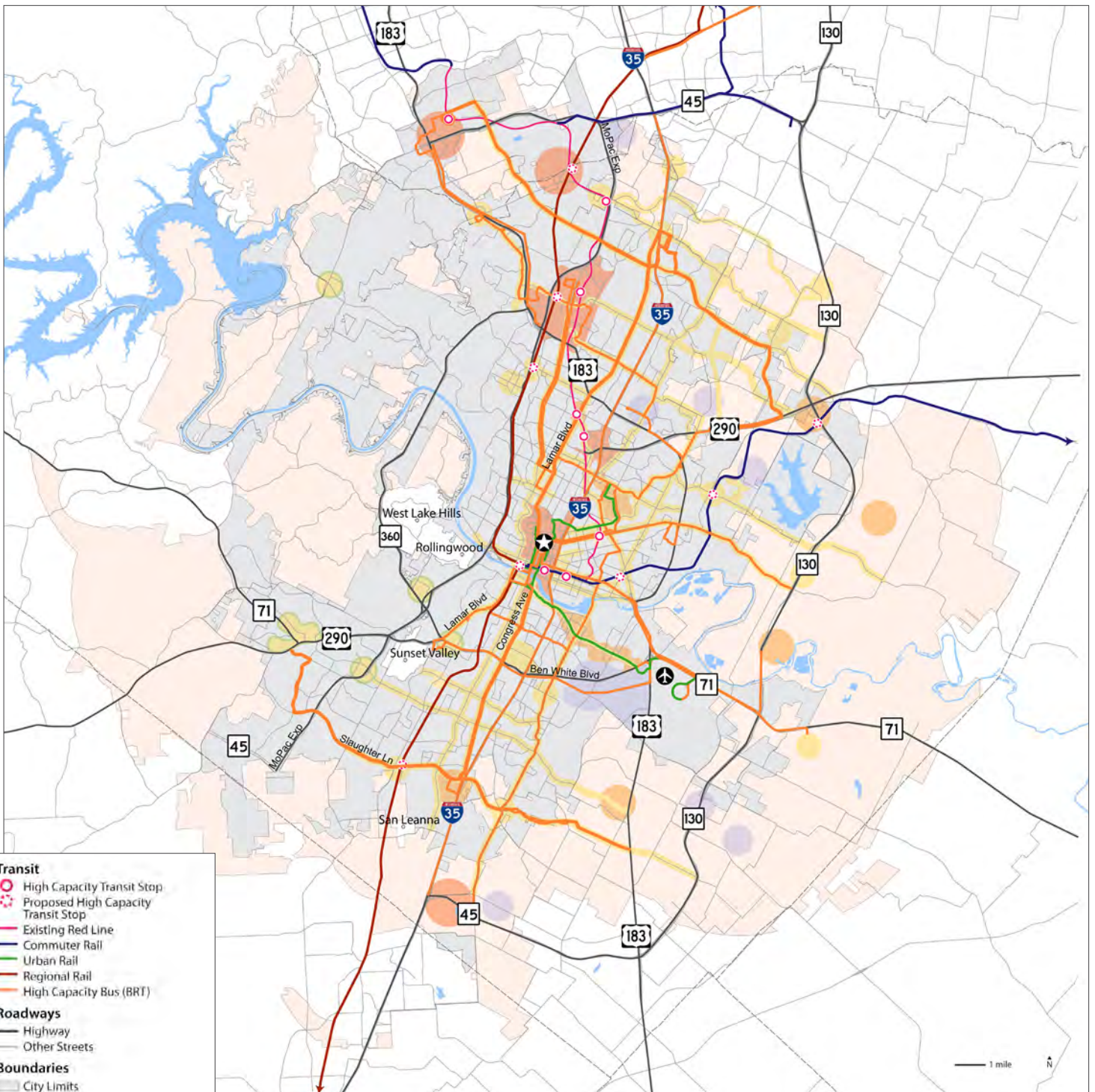
## Imagine Austin Comprehensive Plan

Figure 4.2 Bicycle and Pedestrian Networks



Activity centers and corridors illustrated on the Growth Concept Map are pedestrian-friendly, walkable, and bikable areas. Urban trails serve recreation and transportation functions, including biking and hiking, and also provide important environmental benefits by creating open space linkages and expanding the City's green infrastructure network.

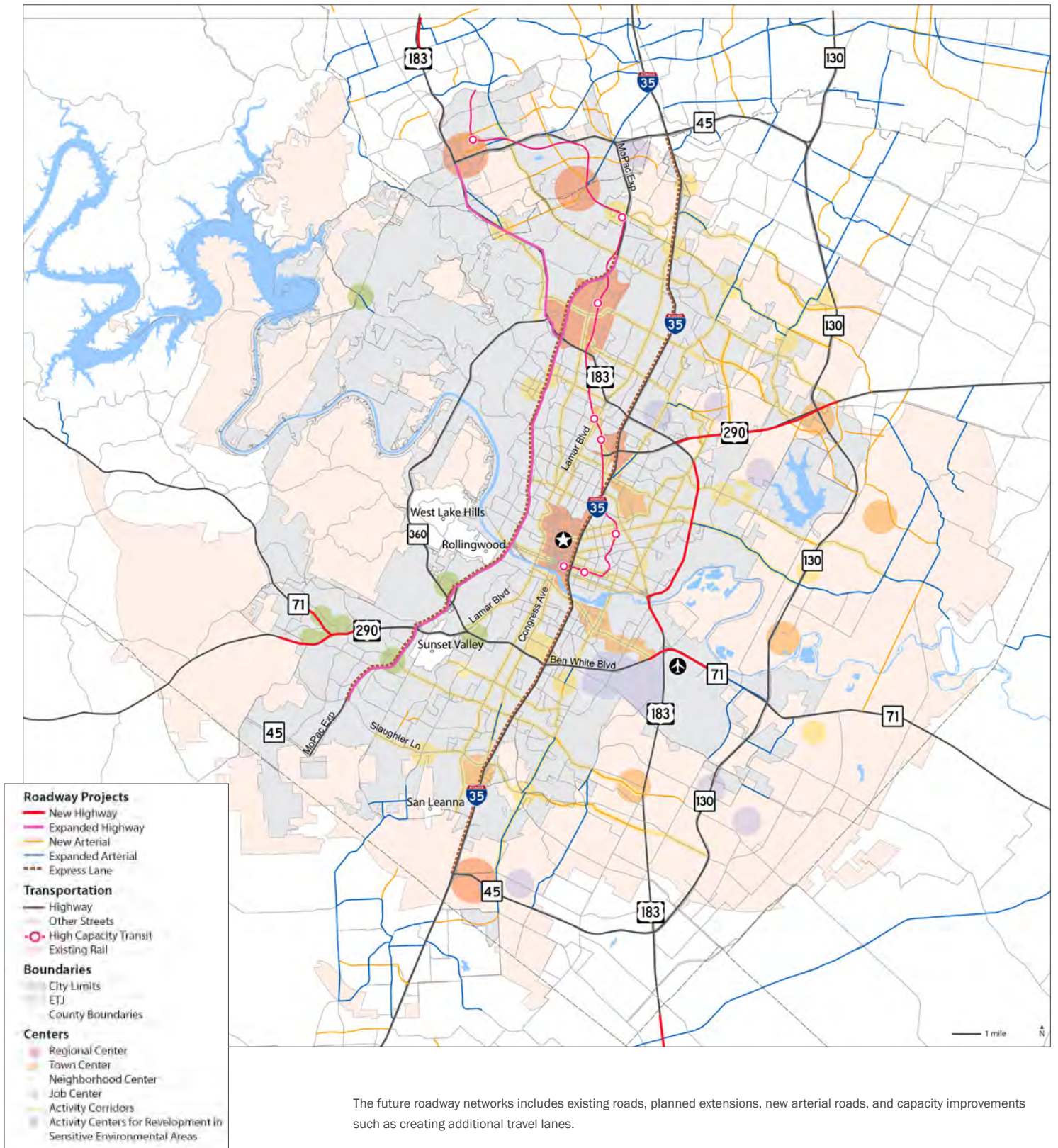
Figure 4.3 Transit Networks



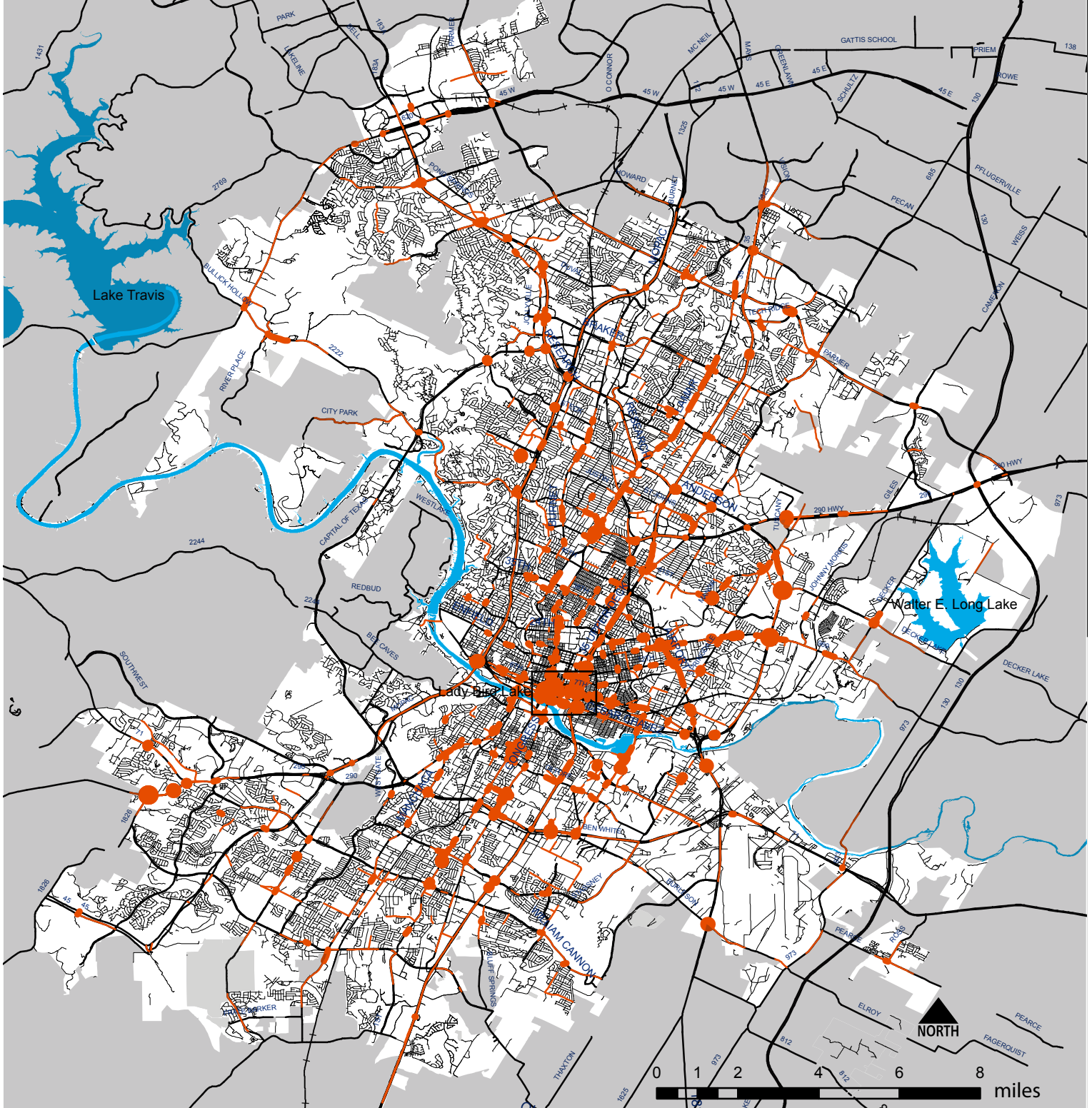
The future transit network includes the existing Capital MetroRail Red Line, regional rail, commuter rail, urban rail, and bus rapid transit. Local bus routes are an essential element of the transit network; however, due to route changes and for the sake of a more understandable map, local bus service is not illustrated on this map.



Figure 4.4 Roadway Networks



## Vision Zero Action Plan



## High injury & death road network (2010 - 2014)

Roads with incapacitating injury or fatal crashes

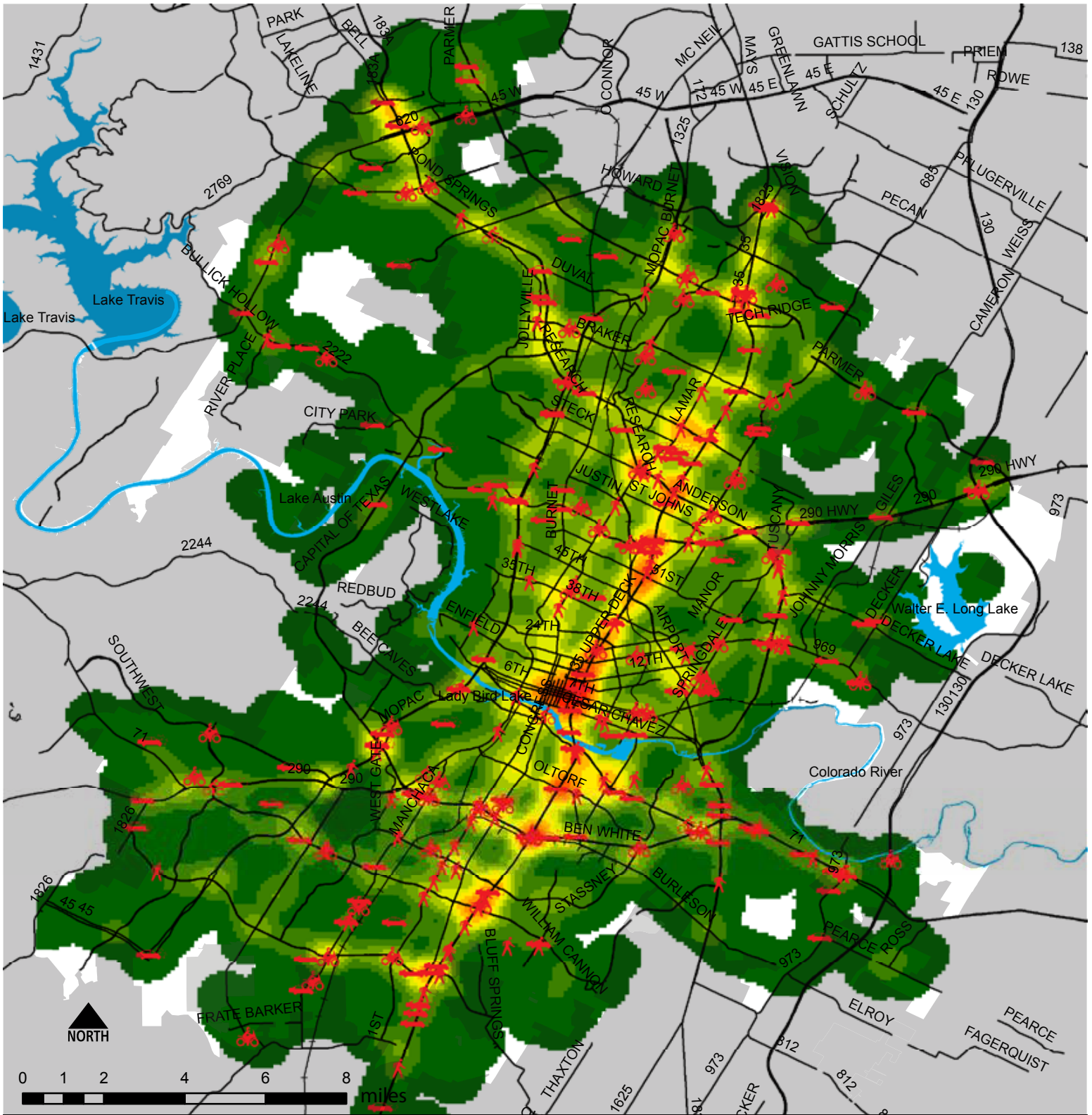
fewer number of  
fatal or  
incapacitating  
crashes



greater number of  
fatal or  
incapacitating  
crashes





Jurisdiction






### Injuries & Deaths: All Modes (2010 - 2014)

**Deaths by mode**

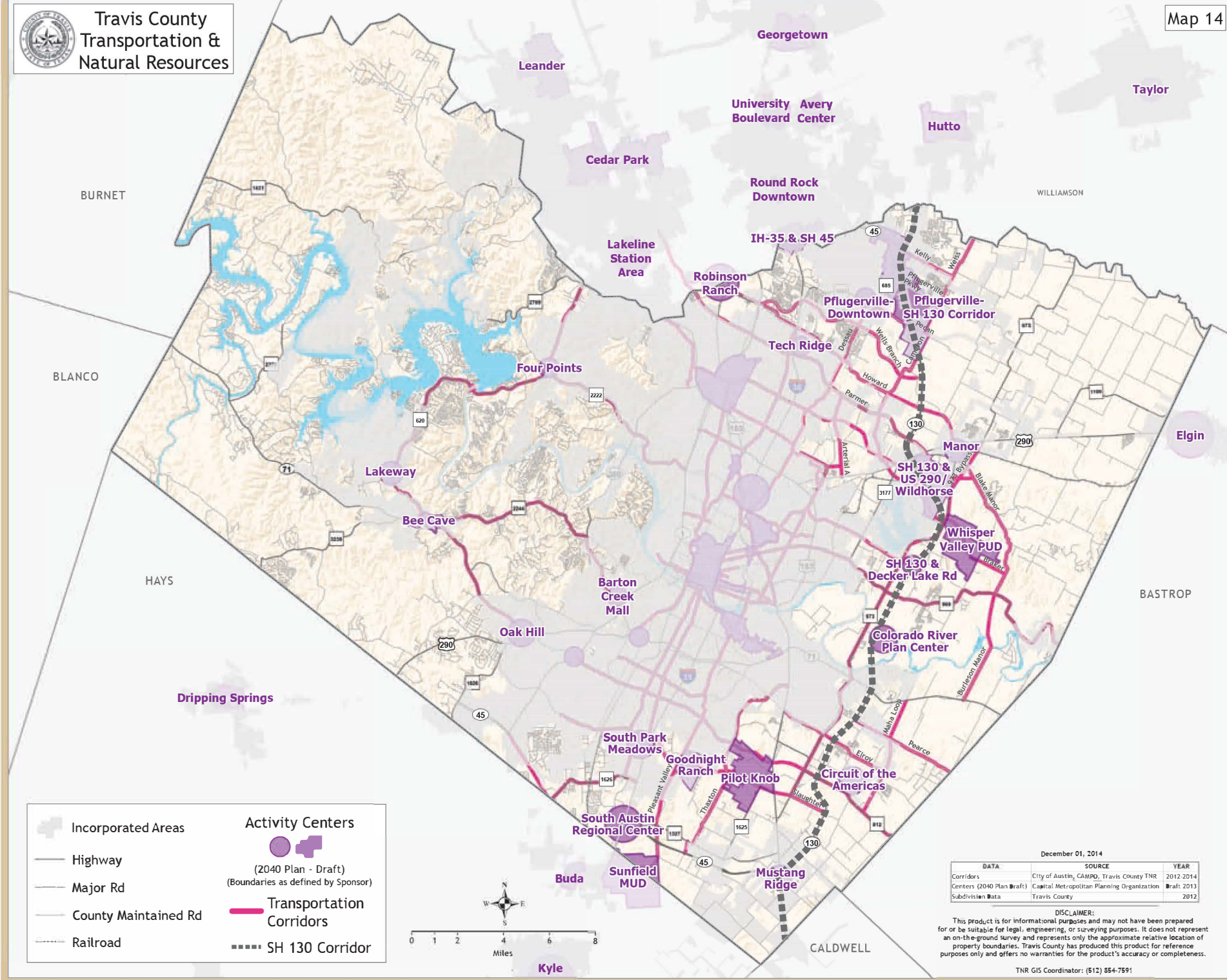
-  driving (145)
-  walking (91)
-  motorcycle (59)
-  biking (7)

**Concentration of injuries & deaths**



 Maps in the Action Plan are also available on the Vision Zero website: [www.austintexas.gov/page/vision-zero-maps](http://www.austintexas.gov/page/vision-zero-maps)

# Travis County Land, Water, and Transportation Plan



	Incorporated Areas		Activity Centers
	Highway		(2040 Plan - Draft)
	Major Rd		(Boundaries as defined by Sponsor)
	County Maintained Rd		Transportation Corridors
	Railroad		SH 130 Corridor



December 01, 2014

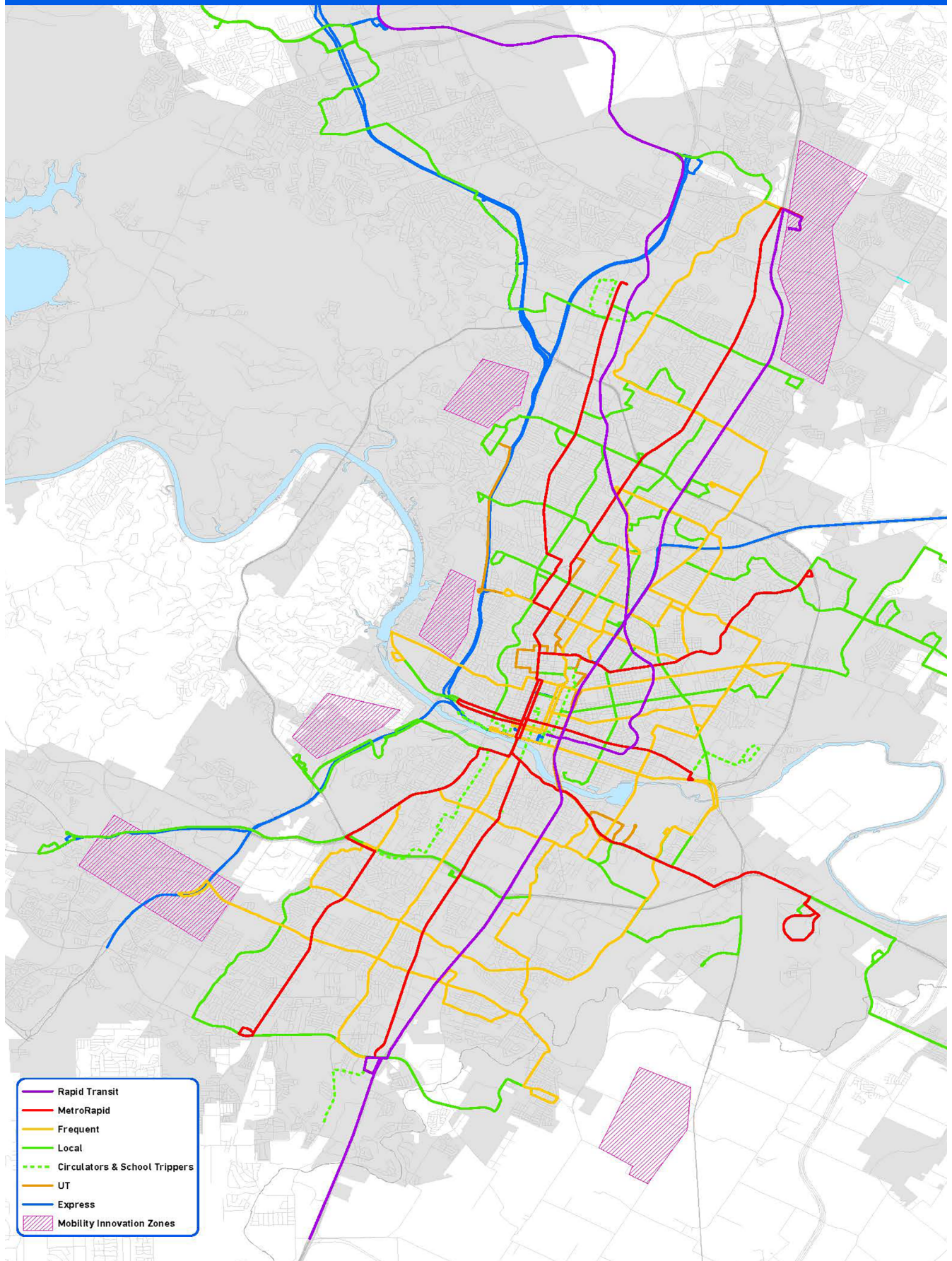
DATA	SOURCE	YEAR
Corridors	City of Austin, CAMPO, Travis County TNR	2012-2014
Centers (2040 Plan Draft)	Capital Metropolitan Planning Organization	Draft 2013
Subdivision Data	Travis County	2012

**DISCLAIMER:**  
This product is for informational purposes and may not have been prepared for or be suitable for legal, engineering, or surveying purposes. It does not represent an on-the-ground survey and represents only the approximate relative location of property boundaries. Travis County has produced this product for reference purposes only and offers no warranties for the product's accuracy or completeness.

TNR GIS Coordinator: (512) 854-7591

## Capital Metro Connections 2025

# CONNECTIONS 2025 TRANSIT PLAN

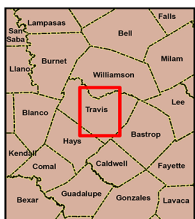
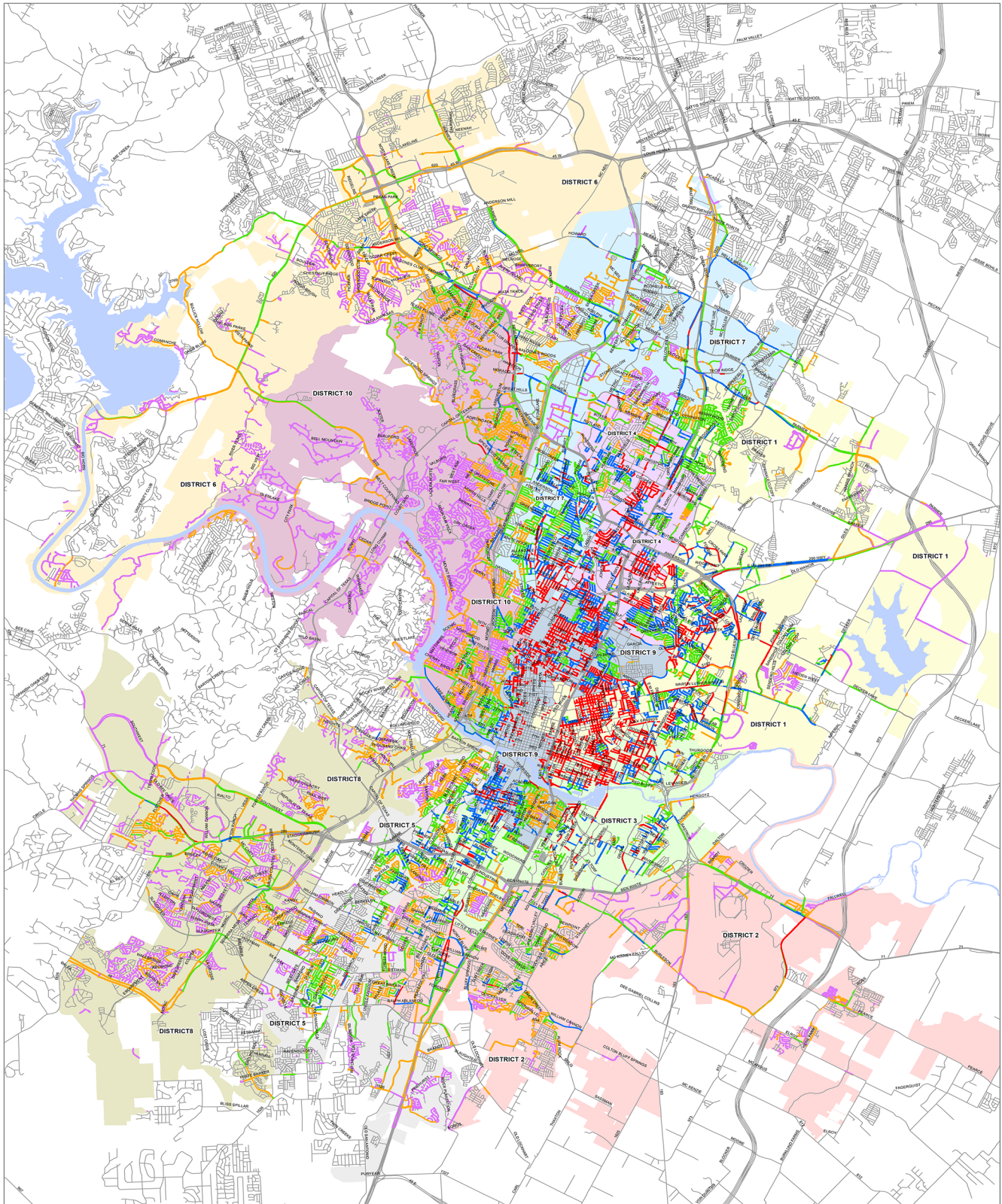




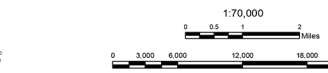
**City of Austin Sidewalk Master Plan**



# City of Austin Pedestrian Plan Absent Sidewalk Scoring Results



HDR makes no representations or warranties regarding accuracy or completeness of the information displayed on this map or data from which it was produced. This map is NOT suitable for survey purposes and does not purport to depict or establish boundaries between land owners or locations of utility infrastructure where survey data is available and field locations have been established.



PRIORITIZATION RANKINGS ARE INTENDED AS A TOOL TO ALLOCATE LIMITED CITY OF AUSTIN SIDEWALK RESOURCES; JUST BECAUSE A PARTICULAR SECTION OF SIDEWALK IS RANKED AS A LOWER PRIORITY DOES NOT MEAN IT IS NOT A NECESSARY COMPONENT OF A COMPLETE PEDESTRIAN NETWORK, CONSISTENT WITH CITY OF AUSTIN COMPLETE STREETS POLICIES ALL PRIVATE AND PUBLIC DEVELOPMENT, REDEVELOPMENT, AND CAPITAL IMPROVEMENT PROJECTS SHOULD INCLUDE ADA COMPLIANT SIDEWALKS (OR URBAN TRAILS WHERE APPROPRIATE) ALONG THE FULL LENGTH OF EVERY ROAD FRONTAGE (UNLESS ALTERNATIVE COMPLIANCE IS SPECIFICALLY AUTHORIZED BY CITY CODES).

COUNCIL DISTRICT	PIMS ABSENT SIDEWALK SCORE	ABSENT SIDEWALK SEGMENT COUNT
1	<= 30.00 (Very Low)	7,985
2	30.01 - 40.00 (Low)	6,779
3	40.01 - 50.00 (Medium)	5,632
4	50.01 - 59.00 (High)	3,785
5	> 59 (Very High)	3,237
6		
7		
8		
9		
10		
Lakes		
Roads		

**SCORING DISTRIBUTION**  
 Minimum: 0.00  
 Maximum: 88.40  
 Mean: 40.03  
 Median: 38.25

**City of Austin Urban Trails Master Plan**

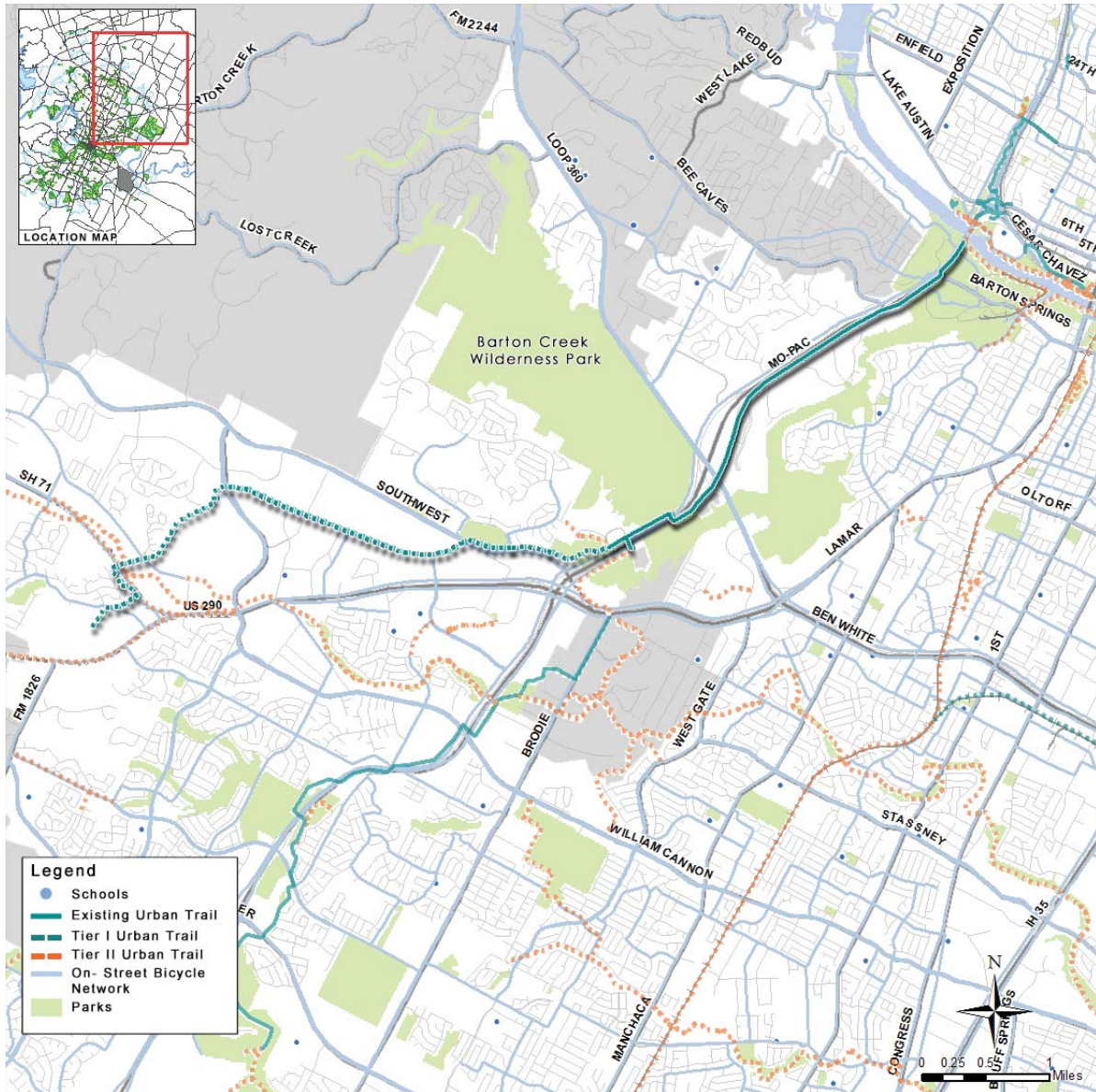
The Barton Corridor consists of the Stratford to Barton Springs Connector, the Mopac Bicycle and Pedestrian Bridge, and the proposed YBC Urban Trail.

The **Stratford to Barton Springs Connector** begins at Lady Bird Lake just east of Mopac and continues south for about 2.5 miles until Tuscan Terrace, near Loop 360 Highway.

The **Mopac Bicycle and Pedestrian Bridge** project includes three phases, providing protected bridge facilities over Barton Creek and Loop 360.

Phase I will construct a bicycle/pedestrian bridge over Barton Creek at Mopac Expressway and improve bicycle and pedestrian connections to Southwest Parkway, Loop 360 and the Violet Crown Trail. Phase II will construct a bicycle/pedestrian bridge over Loop 360 at MoPac. The first two phases are funded and construction is scheduled to be complete in 2015.

Phase III, which has not been funded yet, proposes a shared use path along the west side of MoPac connecting Loop 360 to Barton Creek Square Mall.



*Alignments shown are conceptual, and are intended to show geographic connectivity. More detailed routing, environmental evaluations and area connections will be developed for each corridor as funding is identified. Pending a more detailed analysis and adjacent, adequate bicycle/pedestrian facilities, a "no-build" option may be appropriate. A no-build option shall exist when there are environmental constraints that cannot be avoided, when an alternate route that provides an equal level of service is provided, there is a lack of neighborhood or stakeholder support, or there is a lack of available funding.*

# YBC Trail Preliminary Engineering Report

### Recommended Alignment

The preliminary recommended alignment was determined based on the constraints within the evaluation matrix, the restrictions placed by the BCCP and other outside restrictions; this alignment created the most ideal, non-motorized, shared use path and connected the greatest amount of neighborhoods, businesses, and schools while limiting its impact on the surrounding area (see Figure 2, Recommended Alignment, on next page).

- **Segment 1, Option C**
  - **Segment 2, Option F**
  - **Segment 3, Option A\***
  - **Segment 4, Option A\***
- \*As part of the TxDOT Oak Hill Parkway Project*

With a total length of 5.26 miles, the recommended alignment will provide the greatest benefit to the local community. It will provide a safer route for pedestrians and cyclists to navigate through the existing challenging terrain.

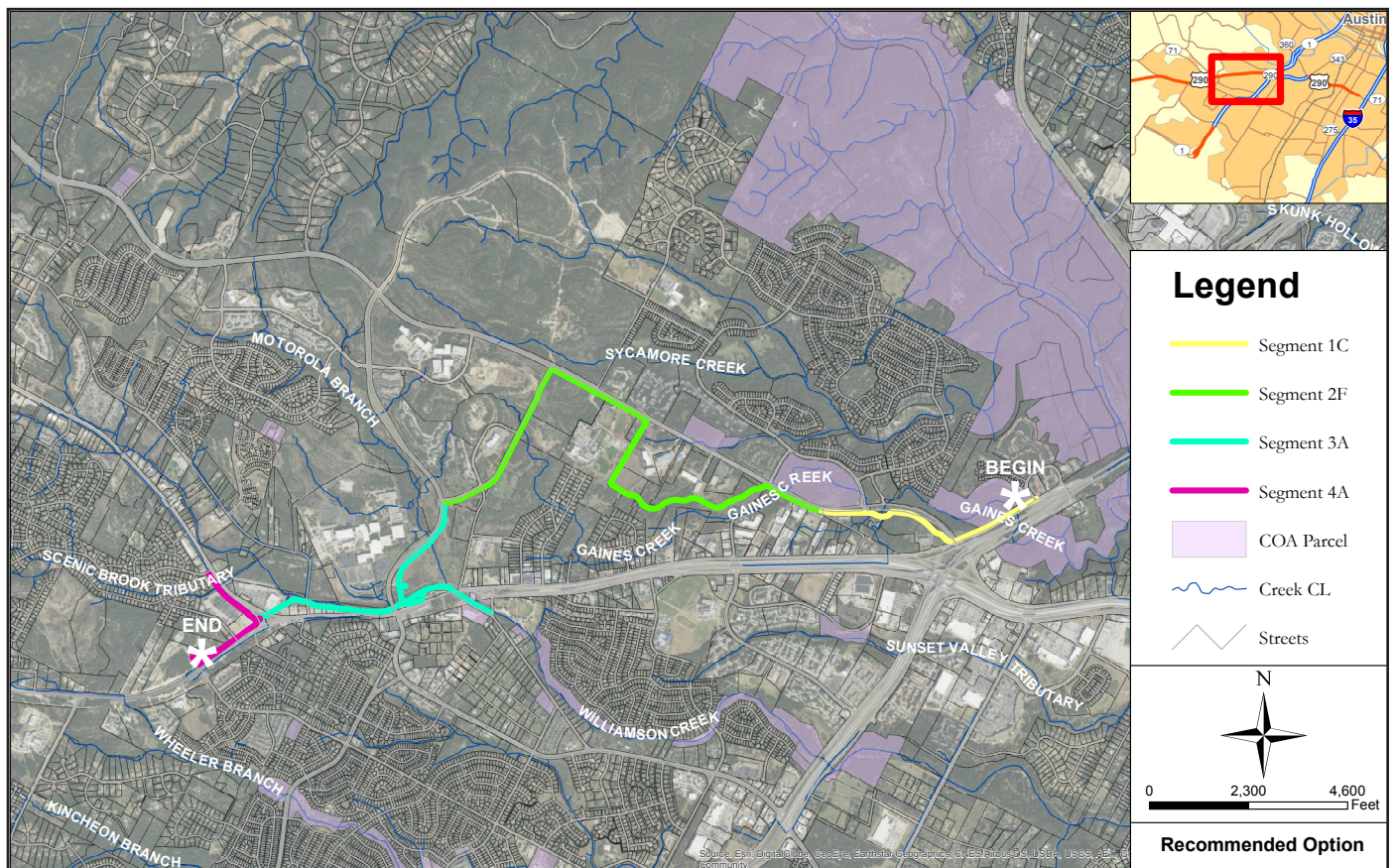


Figure 2: Recommended Alignment



**City of Austin Bicycle Map**

# AUSTIN TEXAS BIKE MAP



## Legend

### Riding Conditions

see descriptions on reverse, under "Using the Map"

- Paved Trails
- Unpaved Trails
- High-Comfort Roads
- Medium-Comfort Roads
- Low-Comfort Roads
- Extremely Low Comfort
- Restricted Sidewalks (see reverse)
- Helpful Sidewalks
- Minor Trails (may require walking)
- Major Streets

### Points of Interest

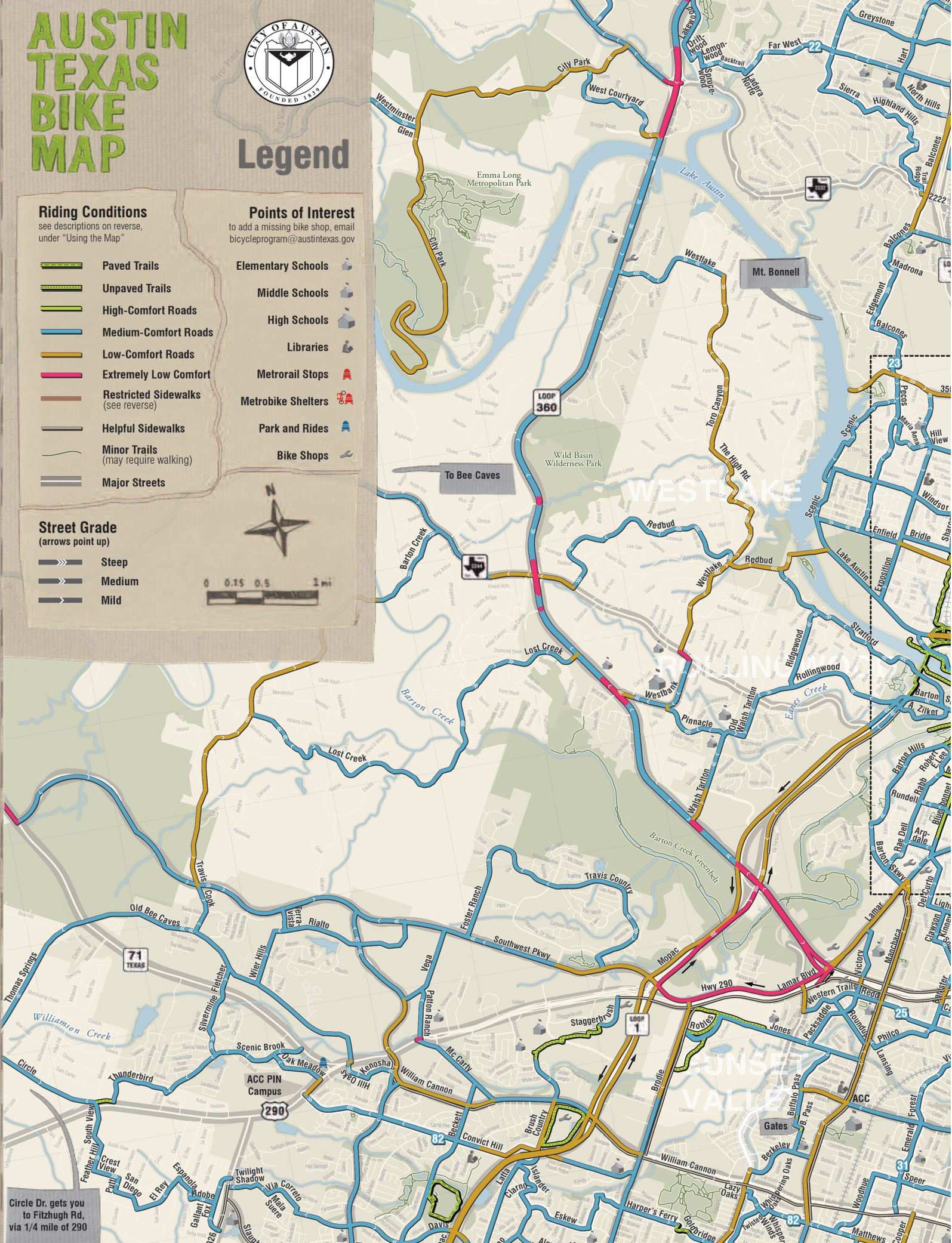
to add a missing bike shop, email [bicycleprogram@austintexas.gov](mailto:bicycleprogram@austintexas.gov)

- Elementary Schools
- Middle Schools
- High Schools
- Libraries
- Metrorail Stops
- Metrobike Shelters
- Park and Rides
- Bike Shops

### Street Grade

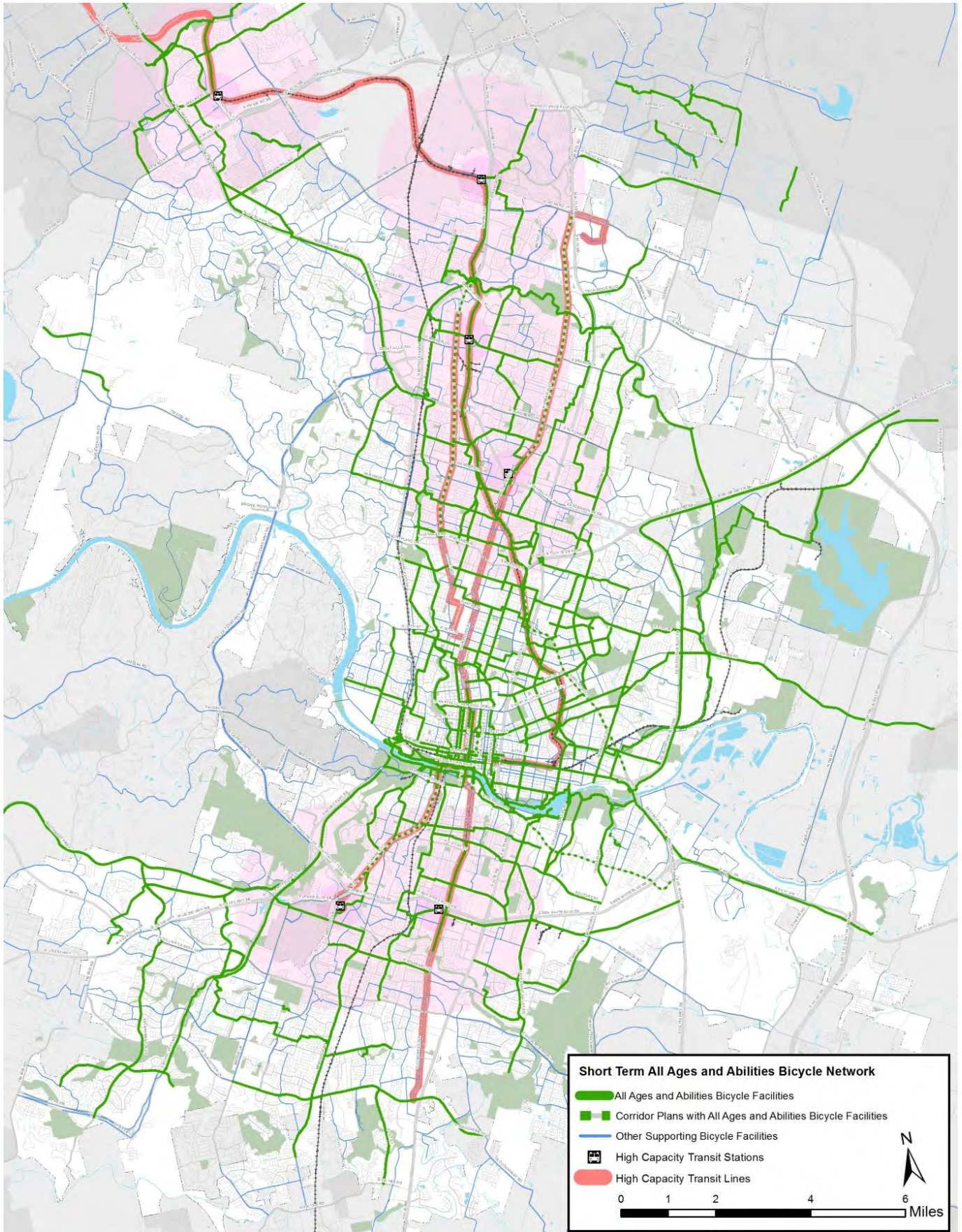
(arrows point up)

- Steep
- Medium
- Mild





# City of Austin Bicycle Master Plan



**MAP OF RECOMMENDED ALL AGES AND ABILITIES BICYCLE NETWORK**

