

Session Name: New Session 3-19-2013 7-35 PM

Date Created: 3/19/2013 7:18:47 PM

Active Participants: 24 of 24

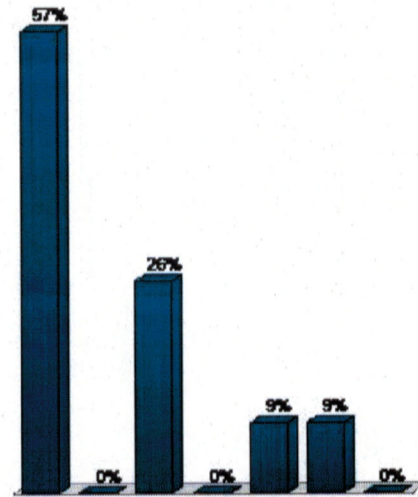
Average Score: 0.00%

Questions: 4

Results By Question

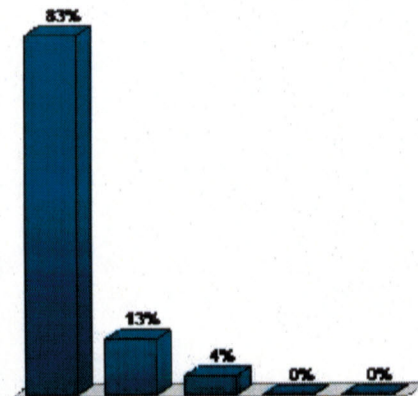
1.) Where do you live? (Multiple Choice)

	Responses	
	Percent	Count
Oak Hill/Southwest Austin	56.52%	13
Hays County	0%	0
Central Austin	26.09%	6
Northwest Austin	0%	0
South/Southeast Austin	8.7%	2
East/North east Austin	8.7%	2
Other	0%	0
Totals	100%	23



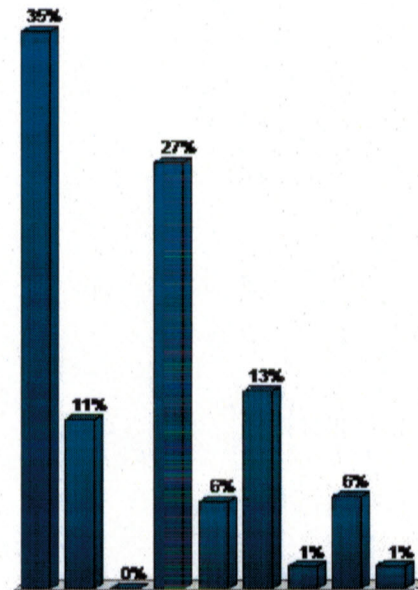
2.) Bike and Pedestrian improvements should be part of the Oak Hill Parkway Project (Multiple Choice)

	Responses	
	Percent	Count
Strongly Agree	82.61%	19
Agree	13.04%	3
Neutral	4.35%	1
Disagree	0%	0
Strongly Disagree	0%	0
Totals	100%	23



3.) Please rank your top three priorities in order from highest to lowest (Priority Ranking)

Responses		
	Percent	Weighted Count
Barton Creek MUT Bridge to "Y" Intersection	35.41%	205
"Y" West to ACC Pinnacle	10.71%	62
West Park PUD	0%	0
Williamson Creek Trail	27.12%	157
Davis Lane Extension	5.53%	32
Brush Country Extension	12.61%	73
MUT – east side of FM 1826 from Hwy 290 W to Slaughter Creek Wildlands	1.38%	8
MUT – on south side of Hwy 290 W between Oak Hill Ball Fields to WCT Trail	5.87%	34
Other	1.38%	8
Totals	100%	579



4.) How would you suggest paying for the improvements? (Multiple Choice)

Responses		
	Percent	Count
County or City bond – property tax	39.13%	9
Toll revenue – based on income from the project	60.87%	14
Wait until funding becomes available from the legislature	0%	0
Other	0%	0
Totals	100%	23

