



OAK HILL PARKWAY

(US 290 / SH 71)

Environmental Workshop Presentation

June 23, 2016

6-8 PM

Oak Hill United Methodist Church
Fellowship Hall



OAK HILL PARKWAY

(US 290 / SH 71)

Environmental Workshop

SCIENCE & STUDIES

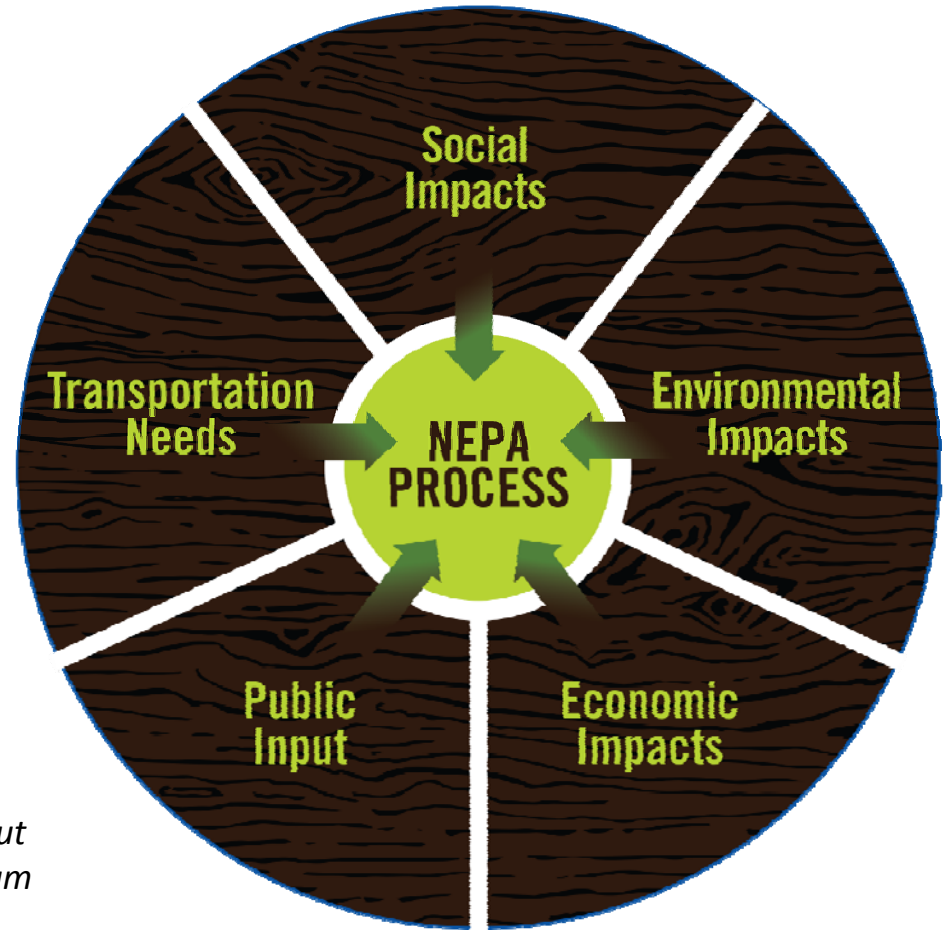
Presented by:

Michelle Dippel, HDR, Inc.



NATIONAL ENVIRONMENTAL POLICY ACT OF 1969 (NEPA)

- Keeps us accountable to state and federal laws for the decision making process
- Helps us determine the Preferred Alternative



The environmental review, consultation, and other actions required by applicable Federal environmental laws for this project are being, or have been, carried-out by TxDOT pursuant to 23 U.S.C. 327 and a Memorandum of Understanding dated December 16, 2014, and executed by FHWA and TxDOT.



NATIONAL ENVIRONMENTAL POLICY ACT OF 1969 (NEPA)

NEPA is procedural

- It establishes the process that agencies must follow in making decisions, but does not dictate the outcome

NEPA is public

- It involves full disclosure
- The public, stakeholders, and agencies are engaged in the process early and often

NEPA ensures informed decisions

- NEPA is about forecasting what happens if a course of action is taken, and documents and discloses the forecasts



OAK HILL
P A R K W A Y

ENVIRONMENTAL STUDIES

These social, economic, and environmental issues are being considered:



**WATER
RESOURCES**



**AIR QUALITY &
TRAFFIC NOISE**



**ARCHEOLOGICAL
& HISTORIC
RESOURCES**



**SOCIAL &
COMMUNITY
IMPACTS**



**LAND USE &
PARKLAND**



**VEGETATION
& WILDLIFE**



**THREATENED &
ENDANGERED
SPECIES**



**INDIRECT &
CUMULATIVE
IMPACTS**



**HAZARDOUS
MATERIALS**



ENVIRONMENTAL STUDIES

Technical Reports and Resource Areas

- Biological Resources (Vegetation & Wildlife)
- Water Resources (Floodplains, Water Quality, Wetlands, & Waters of the US)
- Archeology
- Historic Resources



ENVIRONMENTAL STUDIES

Technical Reports and Resource Areas

- Socioeconomic Resources
- Noise Impacts
- Air Quality



OAK HILL
PARKWAY

ENVIRONMENTAL STUDIES

Science - Current Status

Geology



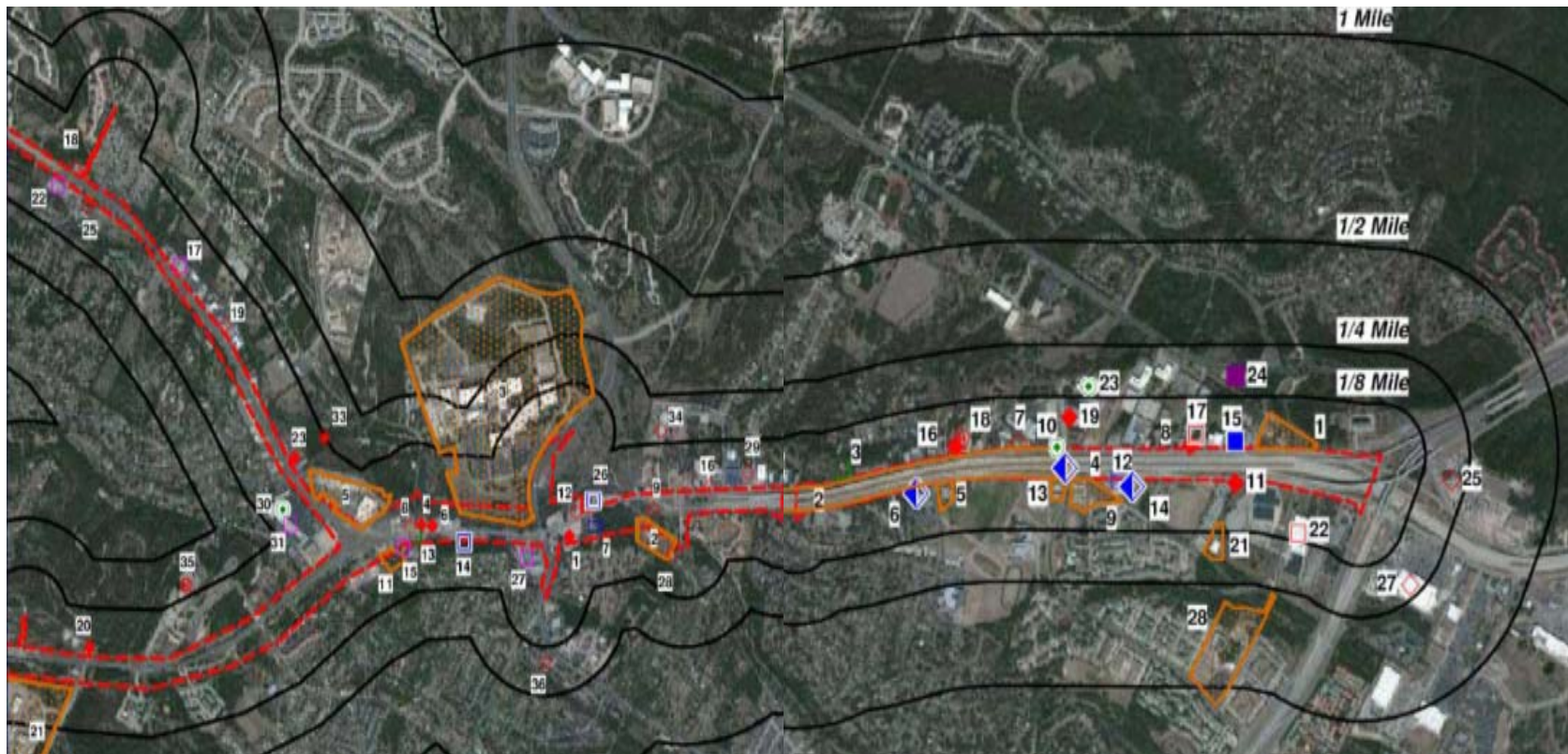


OAK HILL
PARKWAY

ENVIRONMENTAL STUDIES

Science - Current Status

Hazardous Materials





ENVIRONMENTAL STUDY PROCESS

How do we get to a Record of Decision?





OAK HILL
PARKWAY

OAK HILL PARKWAY

(US 290 / SH 71)

Environmental Workshop

ROUNDTABLE DISCUSSION



ROUNDTABLE DISCUSSION

Environmental Study Related Questions

1. Is there anything that you feel should be studied that is not included in the environmental study?
2. Do you have any information about any of these subject areas that the project team could benefit from?



OAK HILL PARKWAY

(US 290 / SH 71)

Environmental Workshop

TREES

Presented by:

Meghan Pawlowski, CMEC, Inc.

Michael Embesi, City of Austin

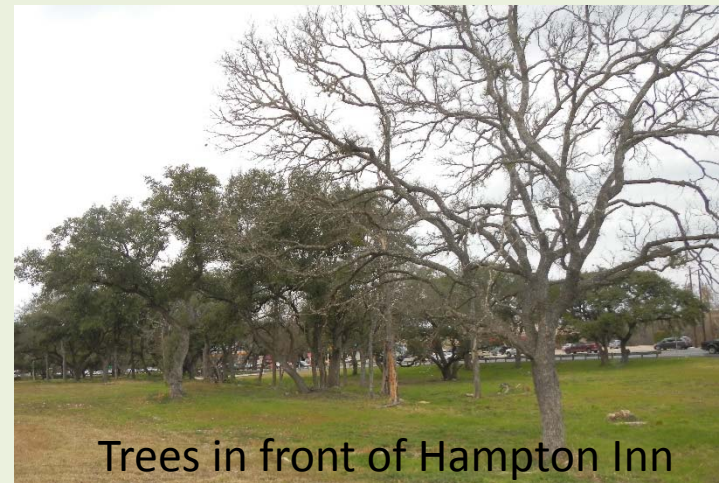


ENVIRONMENTAL STUDY PROCESS

Tree Survey Results – Overview and Technique

Tree Surveys

- 2007 & 2015
 - Pedestrian surveys
 - Species
 - Size (DBH = diameter at breast height)
 - GPS location
 - Desktop Analysis
 - Undisturbed by construction
 - Removed by construction
 - Saved by schematic revision



Trees in front of Hampton Inn



ENVIRONMENTAL STUDY PROCESS

Tree Survey Results – Species Distribution

Species Impact	Alternative A			Alternative C		
	Take	Leave	Saved	Take	Leave	Saved
Ash	0	1	1	0	1	0
Bitternut Hickory	2	1	0	2	1	0
Cedar Elm	12	8	2	12	8	2
Cottonwood	1	2	0	1	2	0
Elm	24	21	2	23	22	0
Hackberry	3	7	0	3	7	0
Live Oak	119	90	7	123	86	8
Maple	0	1	0	0	1	0
Other Oak Species	37	59	0	36	59	0
Pecan	52	29	3	54	28	3
Red Oak	1	0	0	1	0	0
Sycamore	8	9	1	8	9	3
Unknown	1	2	1	1	2	1
Western Soapberry	0	1	0	0	1	0
Willow	2	0	0	0	2	0



ENVIRONMENTAL STUDY PROCESS

Tree Survey Results – Summary of Alternatives

Tree Impact	Alternative A			Alternative C		
	2007 Survey	2015 Survey	Total	2007 Survey	2015 Survey	Total
Trees undisturbed	93	137	231	93	134	229
Trees to be removed	158	104	262	158	107	264
Trees saved by revision	12	5	17	10	7	17
Total number of trees	251	241	493	251	241	493

- Individual Surveys were combined and overlaid on to the schematics for both Alternatives
- Alignments were revised to avoid impacts to several large trees (DBH 45, 41, 38, 33, 31, etc.) for each Alternative
- Tree impacts are expected to be similar for either Alternative



ENVIRONMENTAL STUDY PROCESS

Tree Survey Results – Summary of Alternatives



“Grandmother Oak”; Photo Credit: Gerry Powell



One of the “Nieces”; Photo Credit: Gerry Powell

- Many of the iconic trees within the project area will remain in place



ENVIRONMENTAL STUDY PROCESS

Tree Survey Results – Summary of Alternatives



Two of the “Joe Tanner Trees”; Photo Credit: Gerry Powell

- Impacts are expected at the Joe Tanner trees, Hampton Inn trees, and Old Bee Cave areas where schematic revision was not possible



Oak Hill Parkway Environmental Workshop

City of Austin
Michael Embesi

June 23, 2016

Presentation Outline

- **Austin's Tree History and Jurisdiction**
- **Incorporating Trees Within the Design**
- **Tree Care and Protection During Construction**
- **Tree Planting Plan**



Austin's Urban Forest History



Jurisdiction and Authority

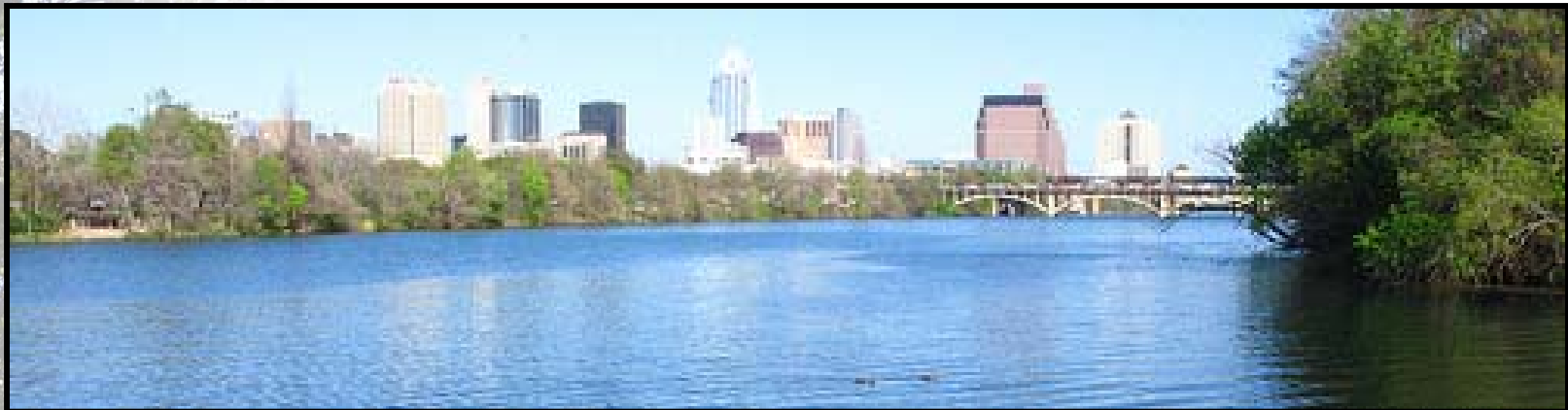
- Tree Preservation
- Tree Protection
- Tree Replacement



TREE & ROOT PROTECTION ZONE

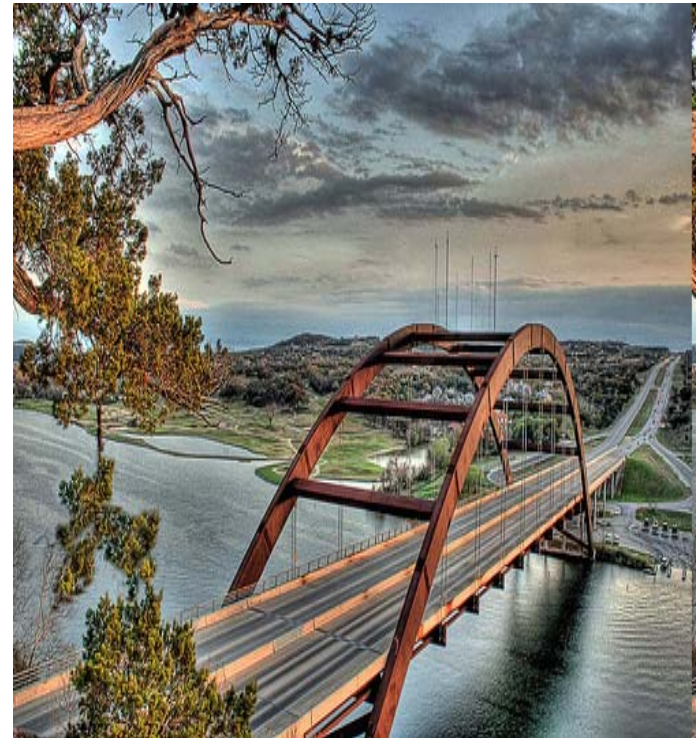
Per City of Austin code (Chapter 25-8, Subchapter B, Article 1) this protective device is to remain in place for the entirety of the development project and illegal removal is subject to fines and work suspensions. Additional information can be obtained at the:
City Arborist (512-974-1876)
web site (<http://www.ci.austin.tx.us/trees>).

Zona de Protección del Árbol y las Raíces el dispositivo protector debe quedarse en el lugar para la totalidad del proyecto de la construcción. Para información adicional, contacta la Arborista Municipal (512) 974-1876 o http://www.ci.austin.tx.us/trees/trees_spanish.htm.



Tree Ordinance Purpose

🌿 **Ensure public health, safety, and welfare**



Preserve the character of Austin's urban forest, protect its current health, and increase its longevity

Trees Within the Design

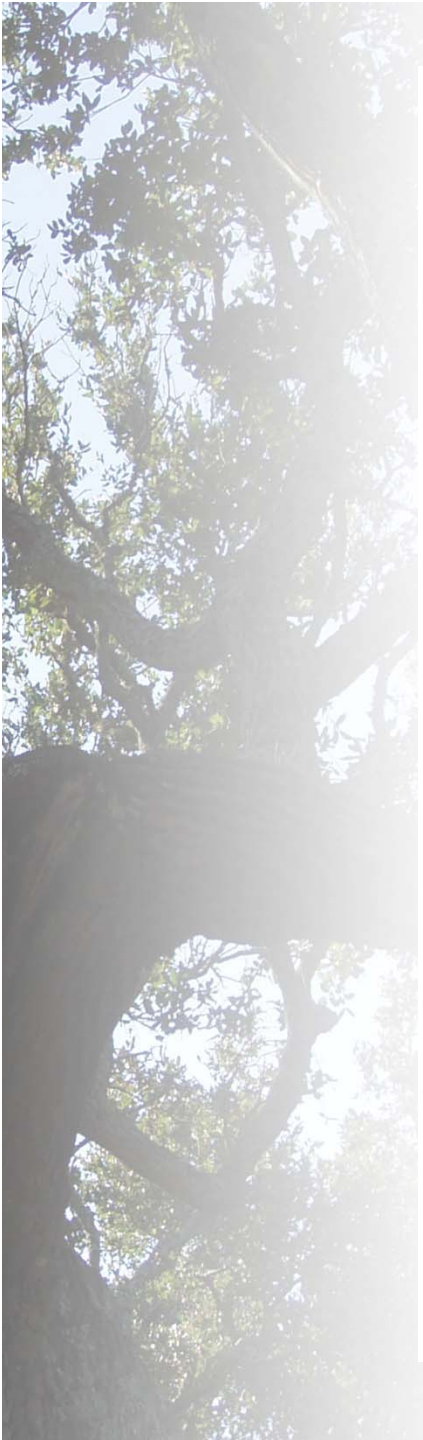
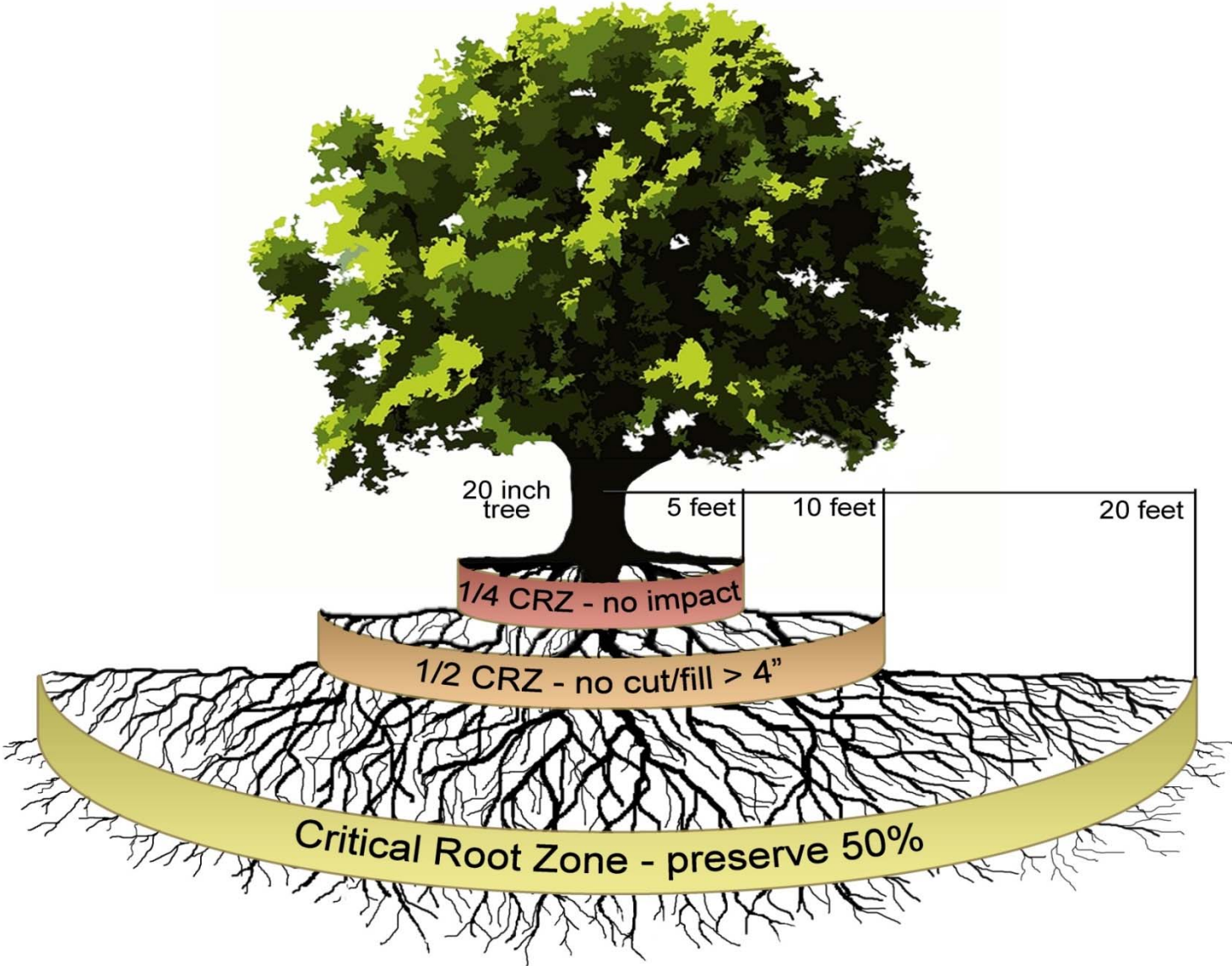


Austin Trees & State Roads

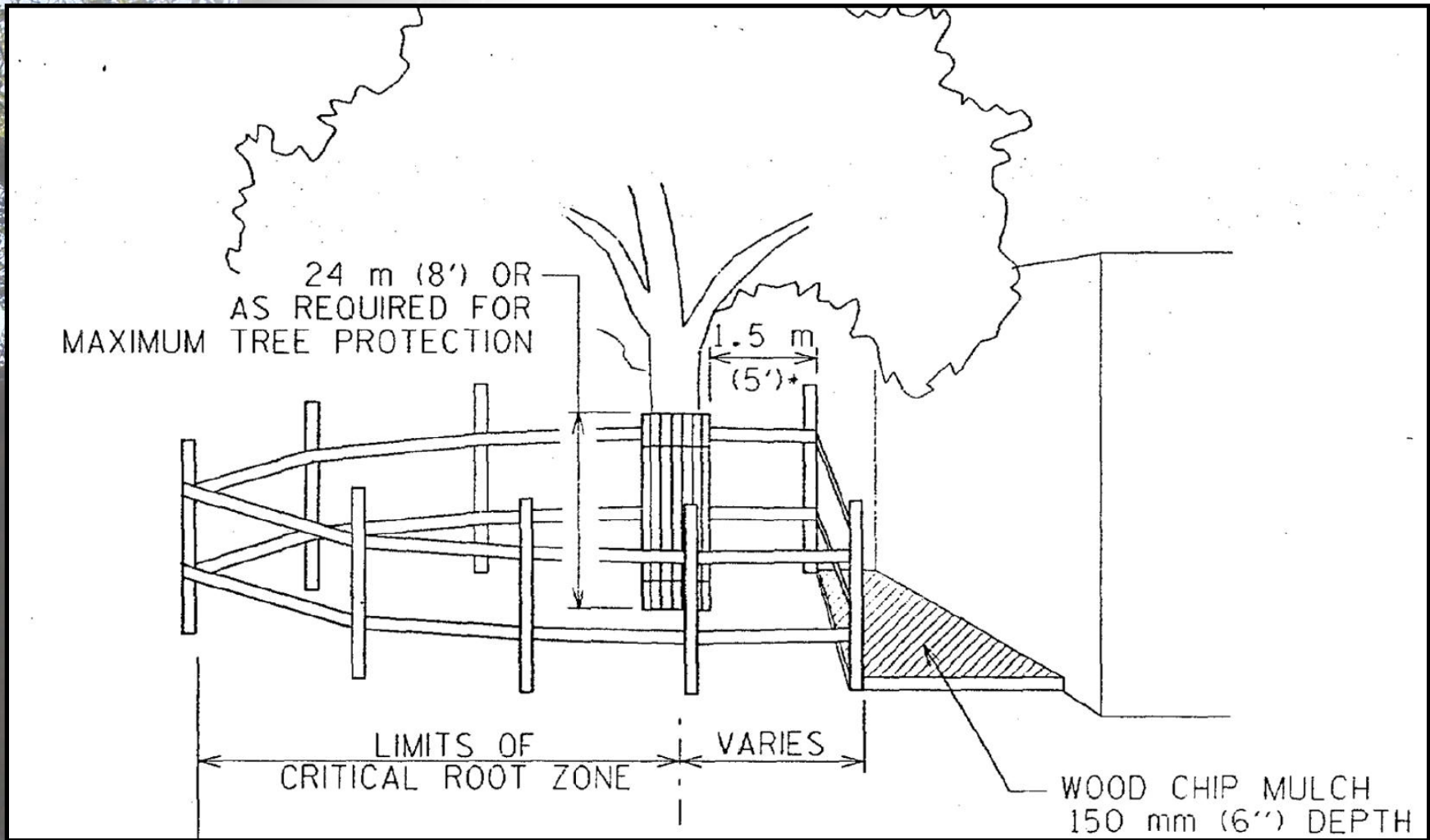
- Lamar Boulevard
- 290 West
(Preparing for Parkway)
- Bergstrom (Callahan's)
- Tree Planting Prioritization Plan
- Congress Avenue



The Critical Root Zone - Development Impact Zones



Tree Protection During Construction



Enhancements

- **Planting Trees**
- **Tree/Soil Care Plan**
- **Transplanting**



**ADOPT-A-
HIGHWAY**



Tree Planting On-Center



Tree Planting On-Center



10 Years Later



Tree Planting in Groves



Tree Planting in Groves



10 Years Later



Tree and Soil Care



asca | RCA
Registered Consulting Arborist®

Transplanting Considerations

Due to the inherent difficulties of transplanting, a comprehensive feasibility report must accompany any such request. The feasibility report must contain such things as:

- * Digging method;
- * Relocation sites;
- * Method of transport;
- * Time of year transplanting will take place;
- * Storage methods (if any); and,
- * Maintenance programs before/after.



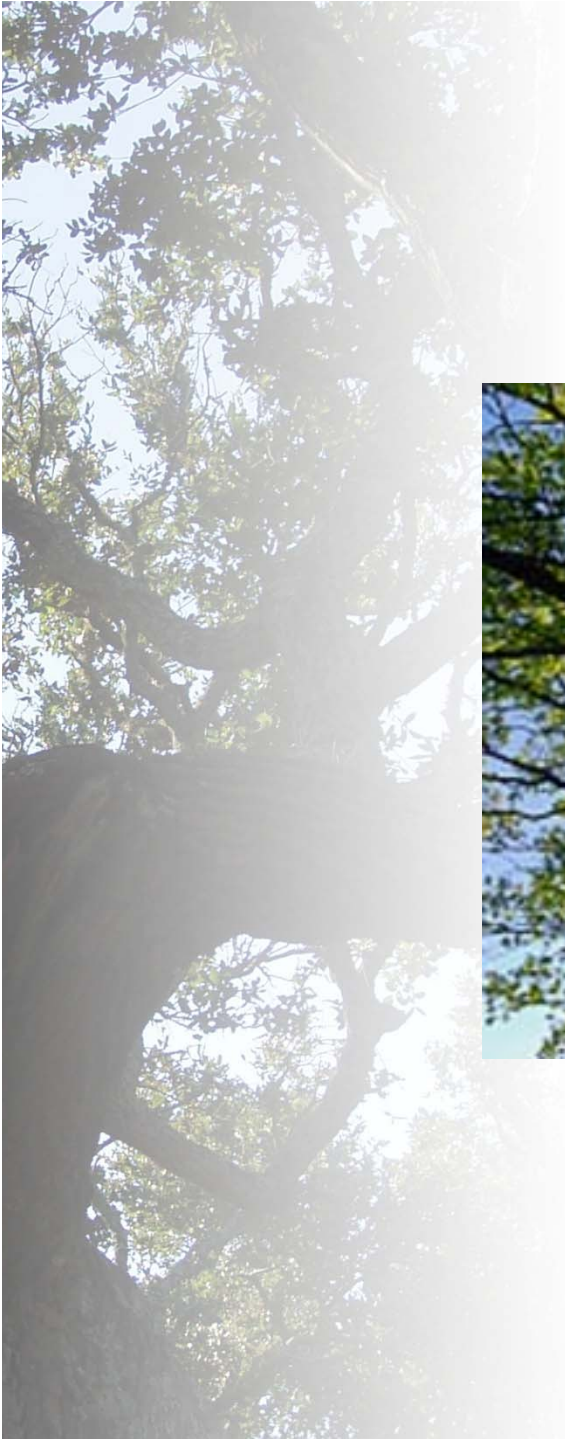
Transplanting Considerations

Due to the inherent difficulties of transplanting, a comprehensive feasibility report must accompany any such request. The feasibility report must contain such things as:

- * Digging method;
- * Relocation sites;
- * Method of transport;
- * Time of year transplanting will take place;
- * Storage methods (if any); and,
- * Maintenance programs before/after.



Thank You





OAK HILL
PARKWAY

OAK HILL PARKWAY

(US 290 / SH 71)

Environmental Workshop

ROUNDTABLE DISCUSSION



AESTHETICS PRIORITY EXERCISE



Tree Relocation



Landscaping



New Trees



Structures



Bike & Pedestrian



WHAT'S NEXT FOR OAK HILL PARKWAY

We will continue to work with the community in 2016 on:

- Trees
- Proposed landscaping and the context sensitive design structures
- Enhancements to Williamson Creek
- Other environmental issues
 - Air quality
 - Noise
 - Water resources

A public hearing is anticipated to be held in the first quarter of 2017.

The designs for both Alternatives A and C have been refined as a result of continued stakeholder outreach and are ready for the detailed analysis phase.

The environmental study team has begun the robust analysis of the Build Alternative and the No Build Alternative; the results of this analysis will indicate the preferred alternative.

The evaluation results, as well as the full Draft Environmental Impact Statement document, will be made available for public review and comment in late 2016/early 2017.



YOU ARE SHAPING OAK HILL PARKWAY

Community input impacts project design

Community participation in meetings, workshops and open houses has resulted in significant improvements to the proposed build alternatives, including:

- Developing alternatives to address traffic congestion in the corridor
- Proposing a design to separate through-traffic from local traffic
- Reducing the elevation of US 290/SH 71 interchange
- Adding new facilities for bicyclists and pedestrians, including a shared use path along the entire corridor
- Depressing the US 290 mainlanes at all crossings west of the US 290/SH 71 intersection
- Extending the improvements past Circle Drive
- Realigning the westbound US 290 exit to RM 1826 to improve access to Austin Community College
- Improving access for businesses along SH 71 just north of US 290
- Reducing potential flooding with upstream water detention ponds
- Minimizing impacts to Williamson Creek
- Adding bus pull out locations
- Realigning the US 290 intersection with William Cannon Drive to save trees

* Please see your handout packet for the full list



OAK HILL PARKWAY
(US 290 / SH 71)
Environmental Workshop

**THANK YOU
FOR YOUR
PARTICIPATION!**

www.OakHillParkway.com
@OakHillParkway on TWITTER