



OAK HILL
PARKWAY

PROJECT LOCATION

Or, Where are we studying?

PROJECT INCLUDES:

- US 290 from MoPac to RM 1826, with a transition area that extends past Circle Drive
- The intersection of US 290 and SH 71
- SH 71 from US 290 to Silvermine Drive





OAK HILL
PARKWAY

PROJECT PURPOSE

Or, What are we trying to do?

- **Improve mobility and operational efficiency**
- **Promote long-term congestion management**
- **Increase multimodal travel options for people and goods**
- **Improve safety**
- **Improve emergency response**



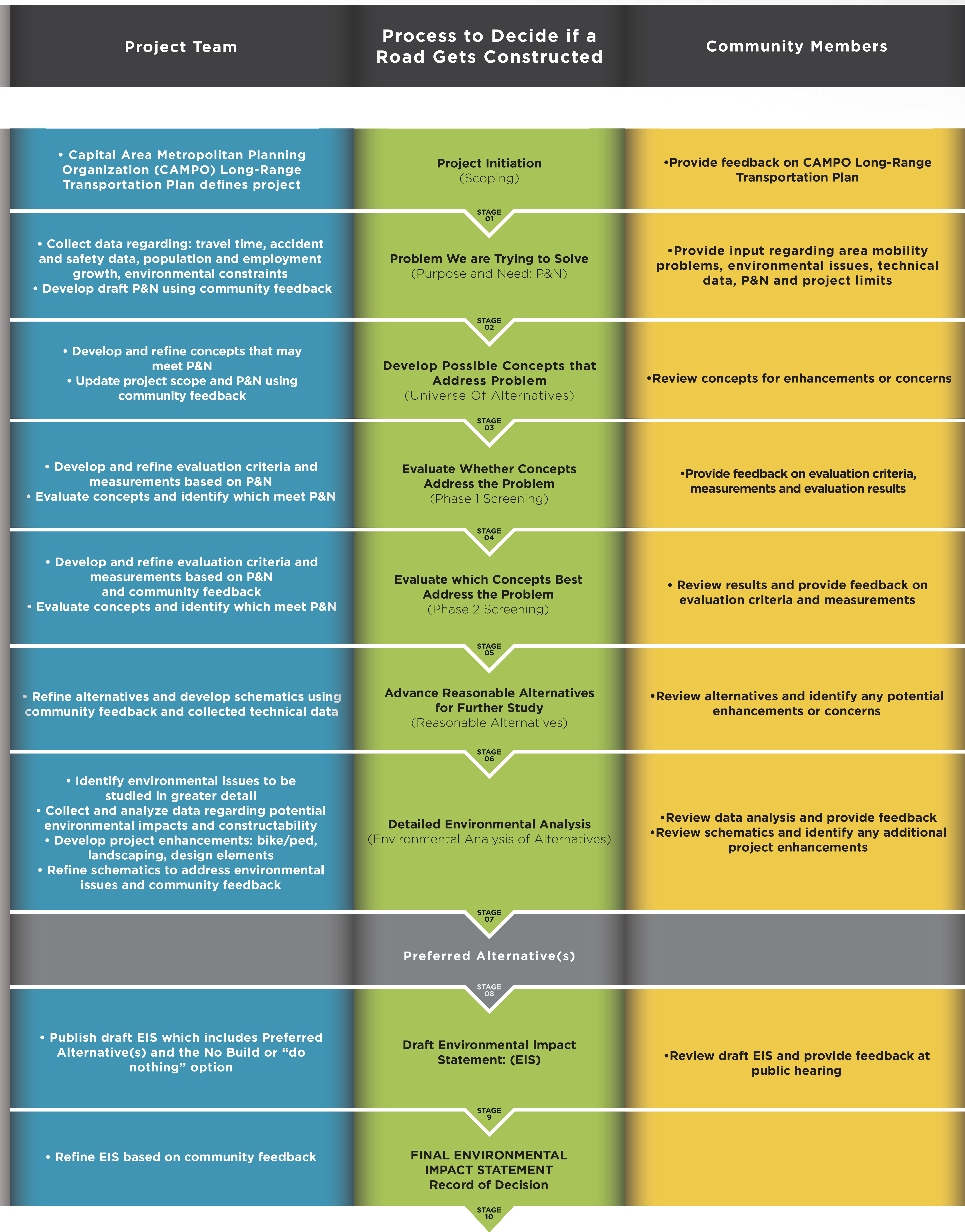
OAK HILL
P A R K W A Y

PROJECT NEED

Or, What are we trying to solve?

- **Traffic congestion related to population growth** – Travis County has grown from 212,000 in 1960 to just over 1 million in 2010 (US Census Data, 2013)
- **Crashes on US 290/SH 71 West** – 304 between 2009-2011, resulting in one fatality, nine incapacitating injuries, other injuries and property damage (TxDOT, 2013)
- **Lost time** – Drivers wasted more than 454,000 hours per year stuck in traffic on US 290/SH 71 in 2014 (Texas Transportation Institute, 2015)
- **Lack of reliable connectivity**
- **Unreliable route for transit and emergency vehicles**

OAK HILL PARKWAY PROCESS: HOW DO WE DECIDE IF A ROAD GETS CONSTRUCTED?

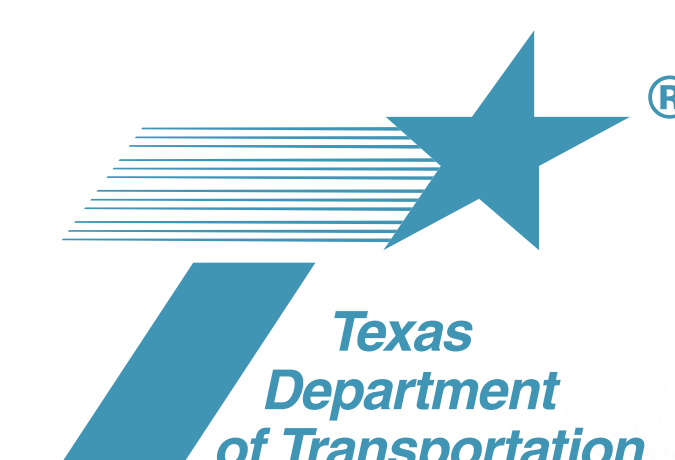


If approved, the Preferred Alternative moves into final design phase IF FUNDING IS AVAILABLE



- Project Team: engineers, planners, scientists, traffic modelers and other experts
- Process to Decide if a Road Gets Constructed
- Community members provide input at stakeholder meetings, through online surveys and emails

LEGEND



WWW.OAKHILLPARKWAY.COM

AGENCIES AND THEIR ROLES IN THE ENVIRONMENTAL PROCESS*

Who They Are	What They Do
<p>TxDOT Environmental Division</p>	<p>Decision Making Agency</p> <ul style="list-style-type: none"> • Review and approve the Environmental Impact Statement (EIS) and technical reports
<p>TxDOT Austin District Central Texas Regional Mobility Authority</p>	<p>Lead Agencies</p> <ul style="list-style-type: none"> • Manage environmental and engineering process • Provide technical review and guidance
<p>U. S. Army Corps of Engineers U.S. Environmental Protection Agency U. S. Fish and Wildlife Service Texas Historical Commission</p>	<p>Cooperating Agencies</p> <ul style="list-style-type: none"> • Share Information • Have jurisdiction with respect to the proposed project • Participate in meetings and field reviews • Identify issues and provide input on Purpose and Need, methodologies, alternatives, potential environmental effects, and project enhancements • Review draft and final EIS
<p>Texas Parks and Wildlife Department Texas Commission on Environmental Quality Travis County City of Austin Capital Metropolitan Transportation Authority</p> <p>Invited: Barton Springs Edwards Aquifer Conservation District, Lower Colorado River Authority, Hays County, Federal Emergency Management Agency, Local and regional Native American tribes</p>	<p>Participating Agencies</p> <ul style="list-style-type: none"> • Share Information • Participate in meetings and field reviews • Identify issues and provide input on Purpose and Need, methodologies, alternatives, potential environmental effects, and project enhancements • Review draft and final EIS

* Capital Area Metropolitan Planning Organization prepares the Long-Range Transportation Plan that identifies potential projects and allocates state and federal funding for both environmental studies and construction projects.

