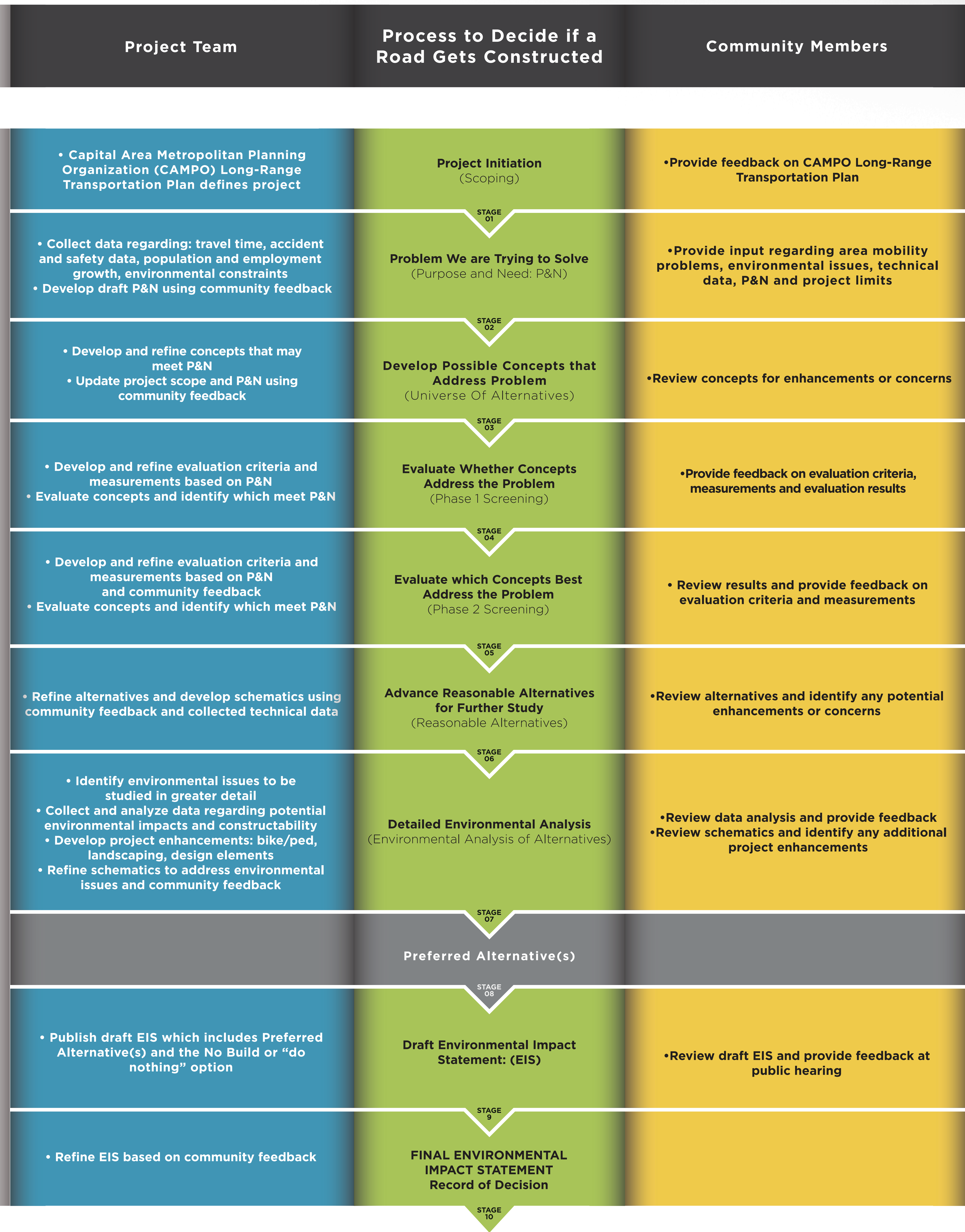


OAK HILL PARKWAY PROCESS: HOW DO WE DECIDE IF A ROAD GETS CONSTRUCTED?

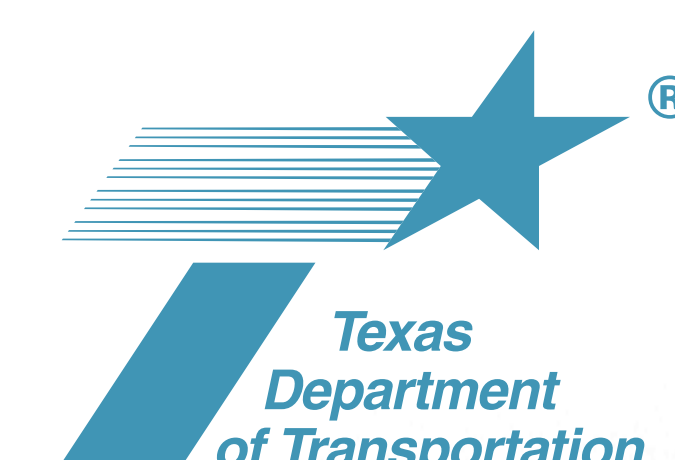


If approved, the Preferred Alternative moves into final design phase IF FUNDING IS AVAILABLE



- Project Team: engineers, planners, scientists, traffic modelers and other experts
- Process to Decide if a Road Gets Constructed
- Community members provide input at stakeholder meetings, through online surveys and emails

LEGEND



WWW.OAKHILLPARKWAY.COM

AGENCIES AND THEIR ROLES IN THE ENVIRONMENTAL PROCESS*

Who They Are	What They Do
<p>TxDOT Environmental Division</p>	<p>Decision Making Agency</p> <ul style="list-style-type: none"> • Review and approve the Environmental Impact Statement (EIS) and technical reports
<p>TxDOT Austin District Central Texas Regional Mobility Authority</p>	<p>Lead Agencies</p> <ul style="list-style-type: none"> • Manage environmental and engineering process • Provide technical review and guidance
<p>U. S. Army Corps of Engineers U.S. Environmental Protection Agency U. S. Fish and Wildlife Service Texas Historical Commission</p>	<p>Cooperating Agencies</p> <ul style="list-style-type: none"> • Share Information • Have jurisdiction with respect to the proposed project • Participate in meetings and field reviews • Identify issues and provide input on Purpose and Need, methodologies, alternatives, potential environmental effects, and project enhancements • Review draft and final EIS
<p>Texas Parks and Wildlife Department Texas Commission on Environmental Quality Travis County City of Austin Capital Metropolitan Transportation Authority</p> <p>Invited: Barton Springs Edwards Aquifer Conservation District, Lower Colorado River Authority, Hays County, Federal Emergency Management Agency, Local and regional Native American tribes</p>	<p>Participating Agencies</p> <ul style="list-style-type: none"> • Share Information • Participate in meetings and field reviews • Identify issues and provide input on Purpose and Need, methodologies, alternatives, potential environmental effects, and project enhancements • Review draft and final EIS

* Capital Area Metropolitan Planning Organization prepares the Long-Range Transportation Plan that identifies potential projects and allocates state and federal funding for both environmental studies and construction projects.

