

# Oak Hill Trails Association

*Connecting People and Places*



2007 4 21

# Who We Are

- **Volunteer Group Formed during the Neighborhood Planning Process**
- **501c3 under the Austin Parks Foundation (contribute on line)**
- **Neighbors Looking for Connectivity in Hike and Bike Trails or Sidewalks**
- **Goal is to Expedite the Process for All types of Trails in the Oak Hill Area**

# **Hike / Bike Trails**

- **Three Types of Trails**
  - **Natural Dirt / Grass**
  - **Crushed Rock**
  - **Hard Surfaces, Concrete**

# **Natural Dirt and Grass Trails**

- **Trails of Convenience**
- **Usually Alongside Creeks**
  - e.g. Barton Creek / Slaughter Wildlands
- **Very Natural / Few Improvements**
- **Inexpensive to Create / Maintain**
- **Usually Narrow / Passage is Difficult**
- **May be Hazardous with Roots and Rocks jutting out / not ADA**



2007 4 21

# **Crushed Rock Trails**

- **Composed of Crushed Limestone or Granite**
- **Good for both Bikes and Hikers**
- **Okay for Strollers and Wheel Chairs**
- **Wider so that people can pass each other**
- **Improved so roots and rocks do not cause tripping hazards**
- **More Maintenance Required**
- **Moderate Cost at \$2 to \$4 per sq foot or about \$125,000 per mile**







# **Multi Use Trails (MUTs)**

- **Hard Surfaces – Concrete or Asphalt**
- **Used for Alternative Transportation**
- **Easily used by all people / ADA**
- **Expensive to Design and Install -  
\$20 / sq ft or about \$1 million per mile.**
- **Usually 10 to 14 feet wide**
- **Low Maintenance**



**Albuquerque**

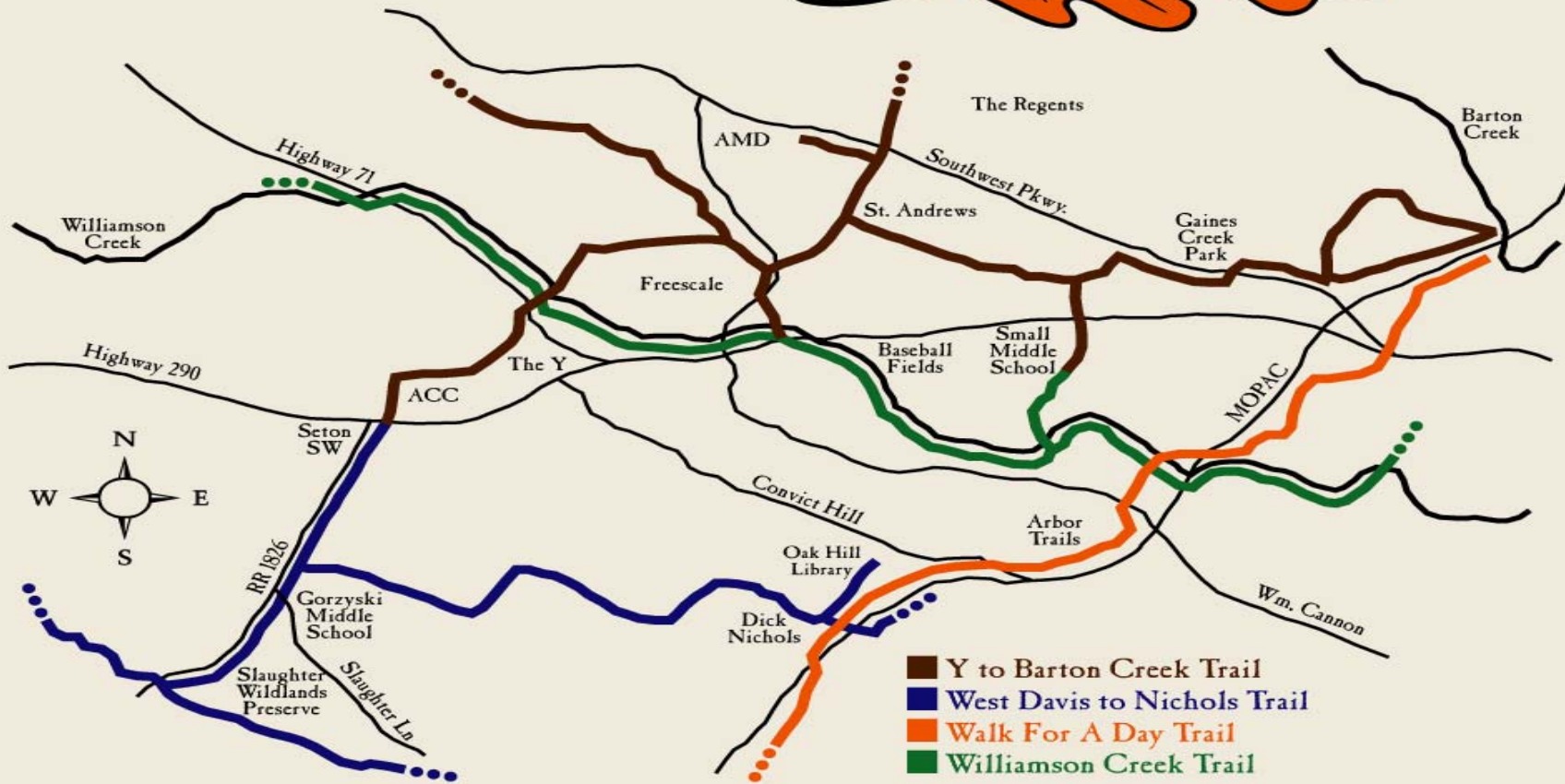
# Multi Use Trails



# Multi Use Trails



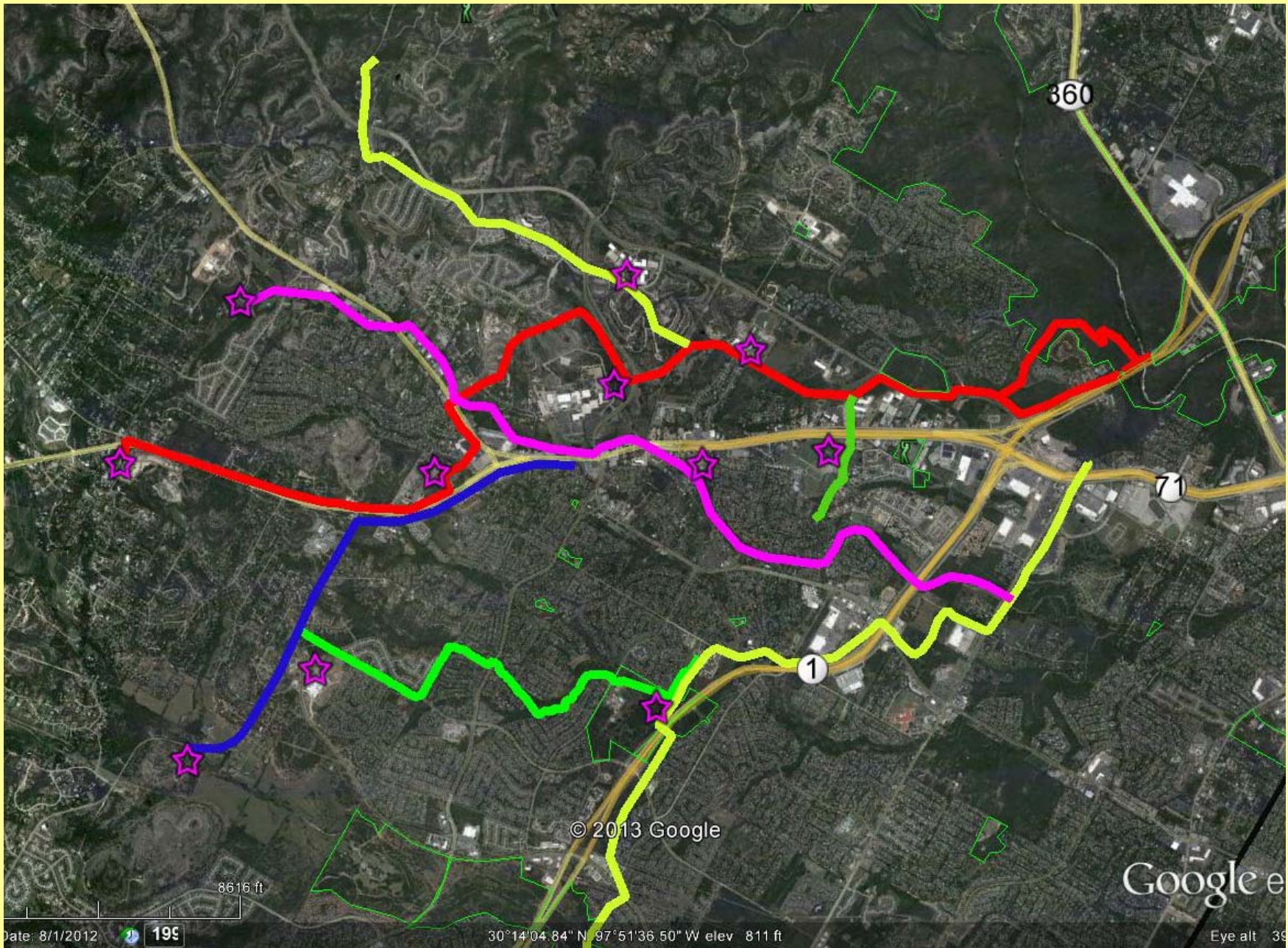
# Oak Hill



- Y to Barton Creek Trail
- West Davis to Nichols Trail
- Walk For A Day Trail
- Williamson Creek Trail

# Trails Association

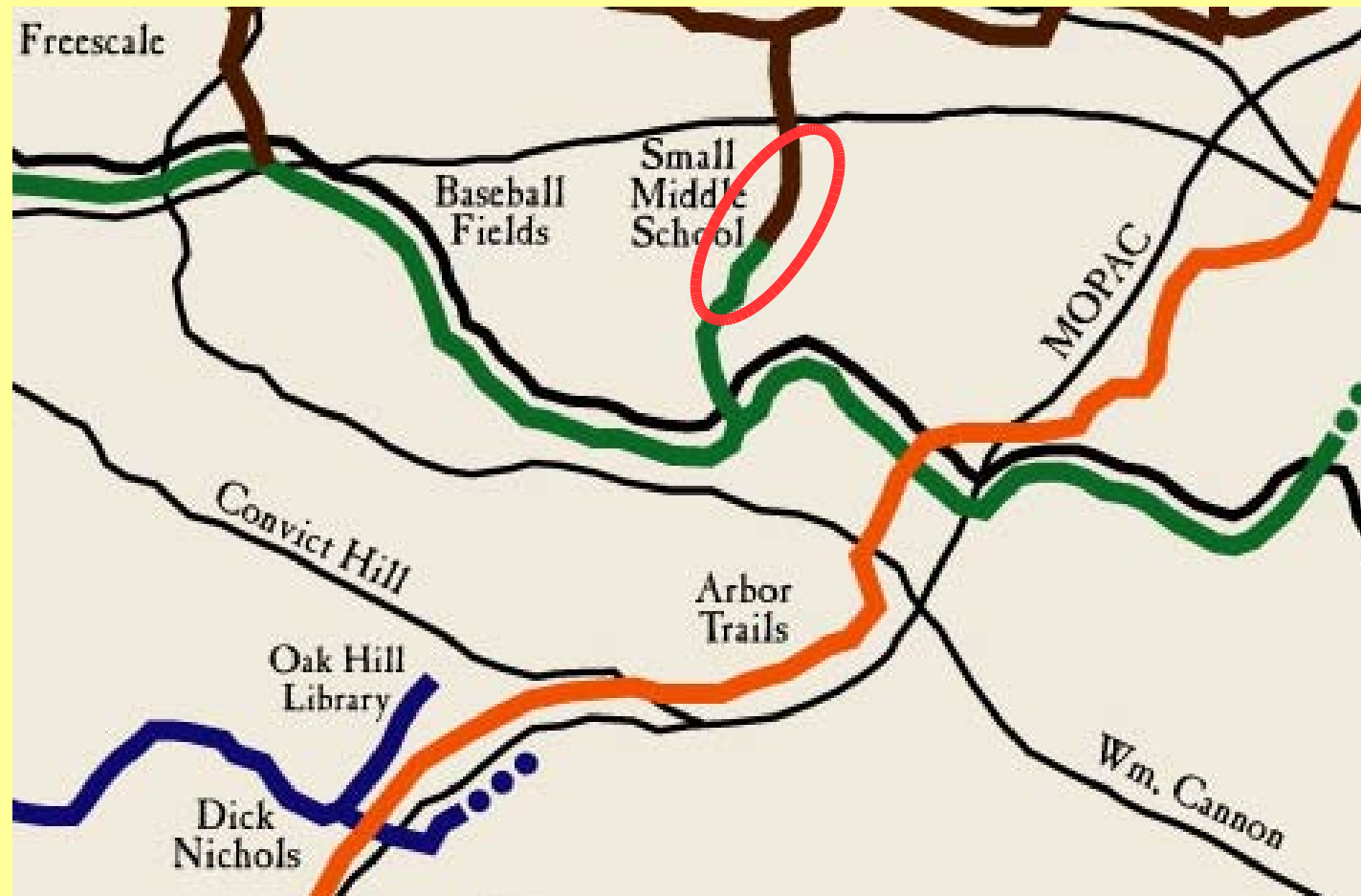
[www.oakhilltrails.org](http://www.oakhilltrails.org)



# Projected Oak Hill MUTs

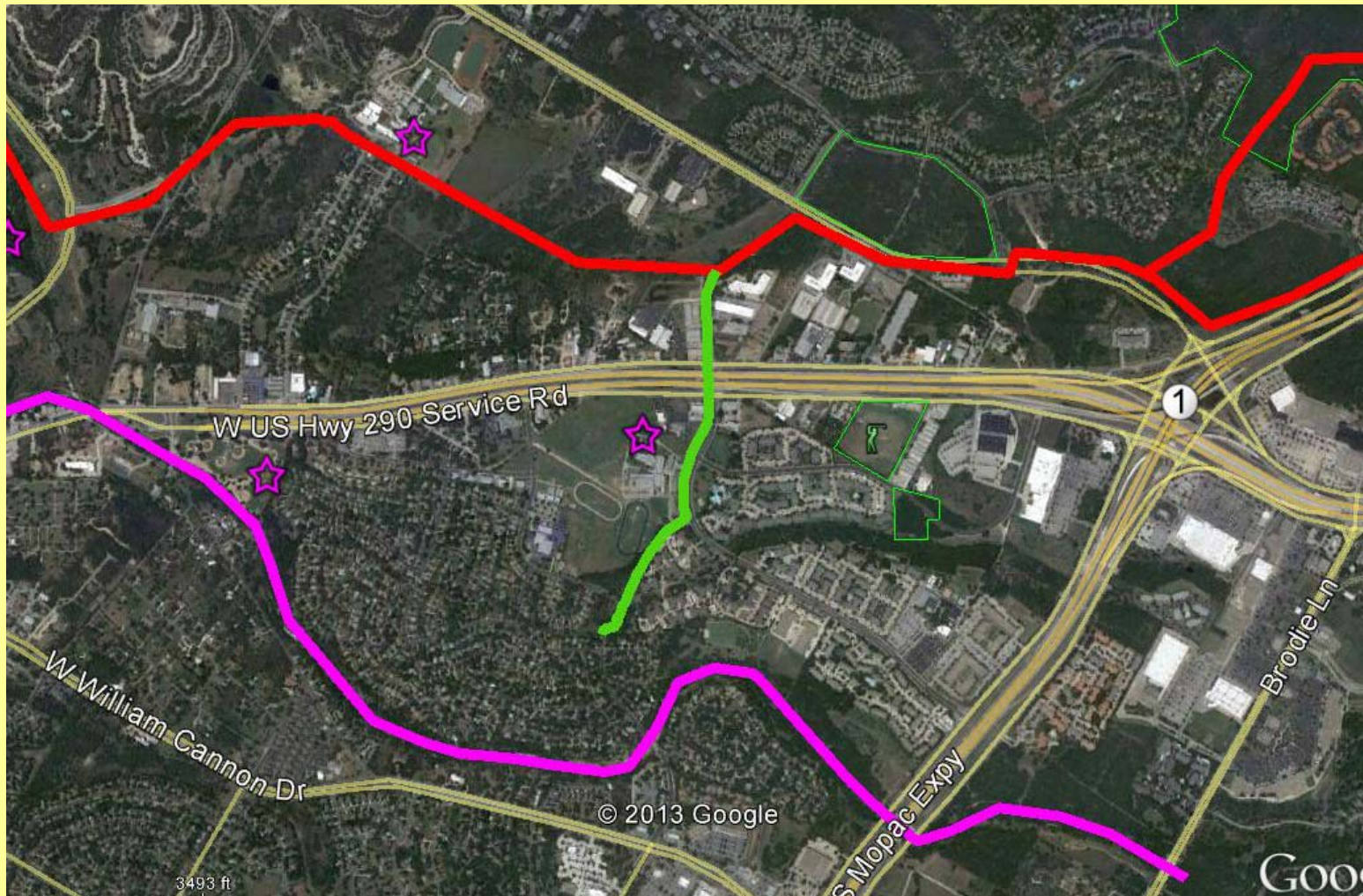
- **Brush Country Completion (BCC)**
- **Nichols to West Davis Trail (N2Davis)**
- **Williamson Creek Trail (WCT)**
- **Y to Barton Creek Trail (YBC)**
- **Y to Slaughter Creek Wildlands (Y2Wild)**

# Brush Country Completion





# Brush Country Completion



# **Brush Country Completion**

- **Connectivity Trail between the end of Brush Country and Hwy 290 West**
- **On City Right of Way**
- **Next to Small Middle and Patton Elementary School**
- **Current Bike Lanes Dead End on Brush Country**
- **City once planned to connect a concrete Multi Use Trail**
- **Requires a small bridge over Drainage**



348 ft

Summerset Trail

Google

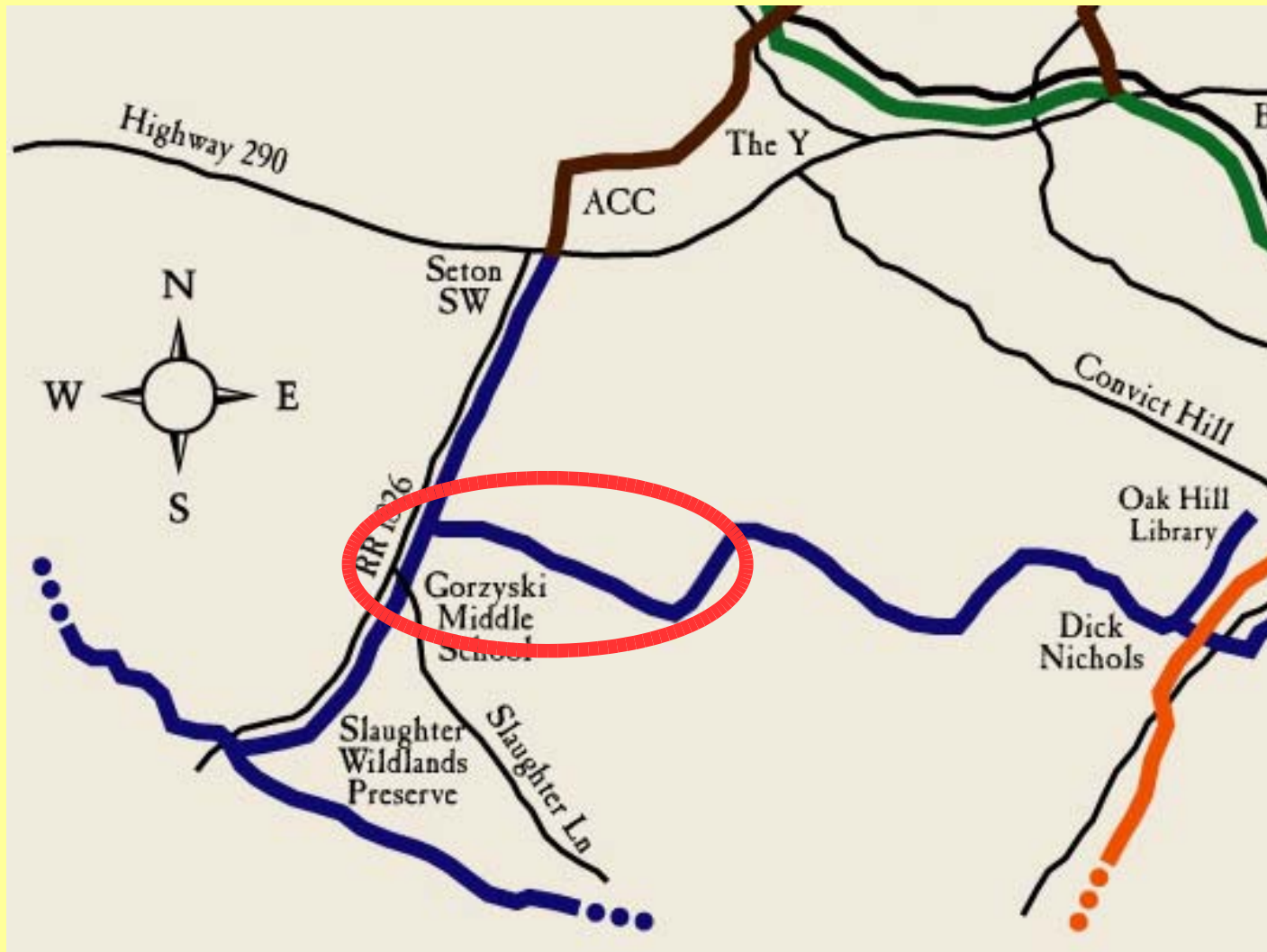
# Brush Country Nature Trail



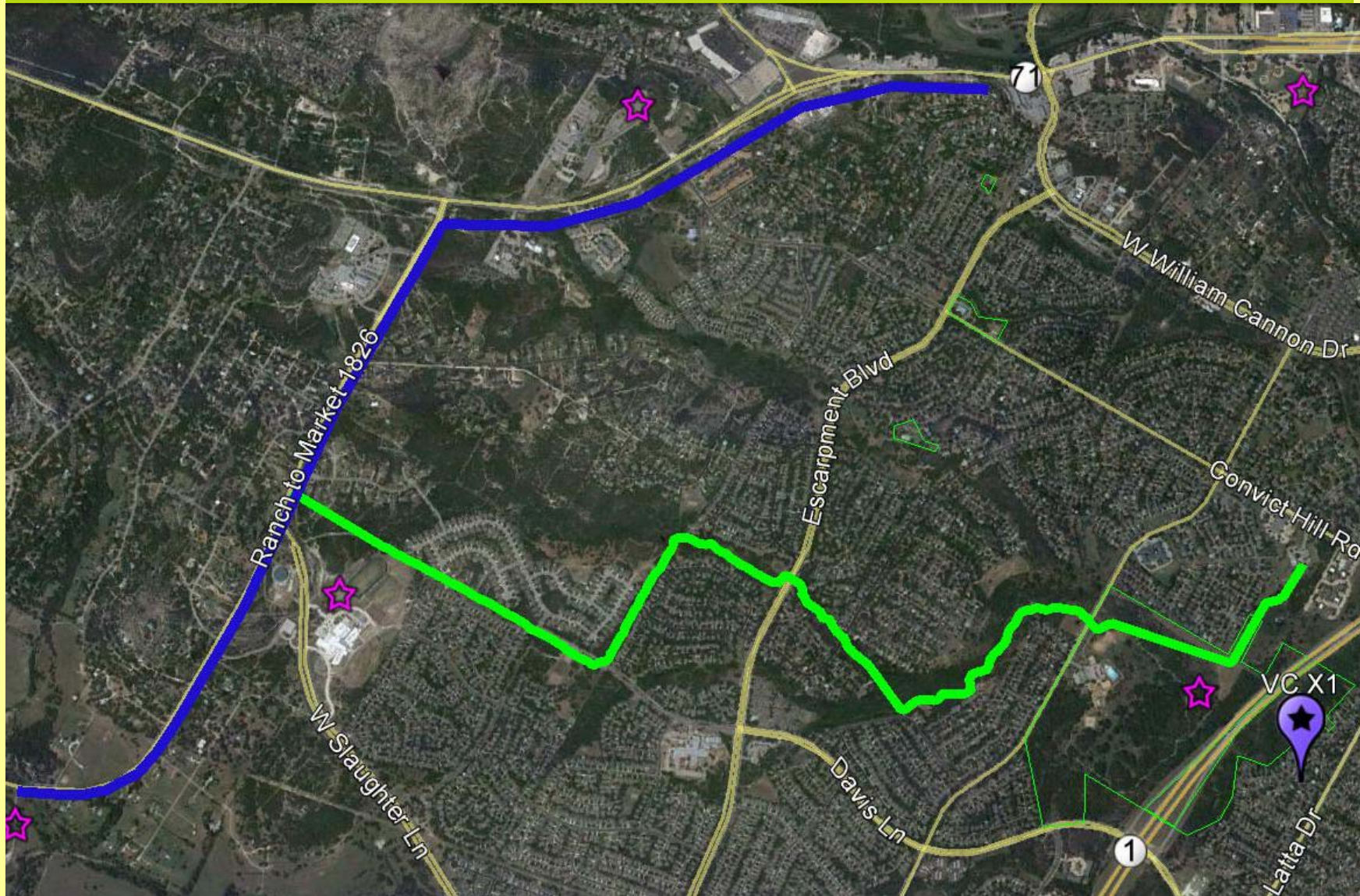
# Westcreek Natural Trail



# West Davis Lane Extension



# West Davis Lane Extension



# **Violet Crown Trail to West Davis Lane / FM1826**

- **Connects the Violet Crown Trail, through Dick Nichols, to West Davis Lane, to FM 1826, then north to Hwy 290 West**
- **West Davis Lane Connection Would be on City ROW**
- **Next to Grotzsky Middle School**
- **Current Bike Lanes Dead End on Davis Lane**



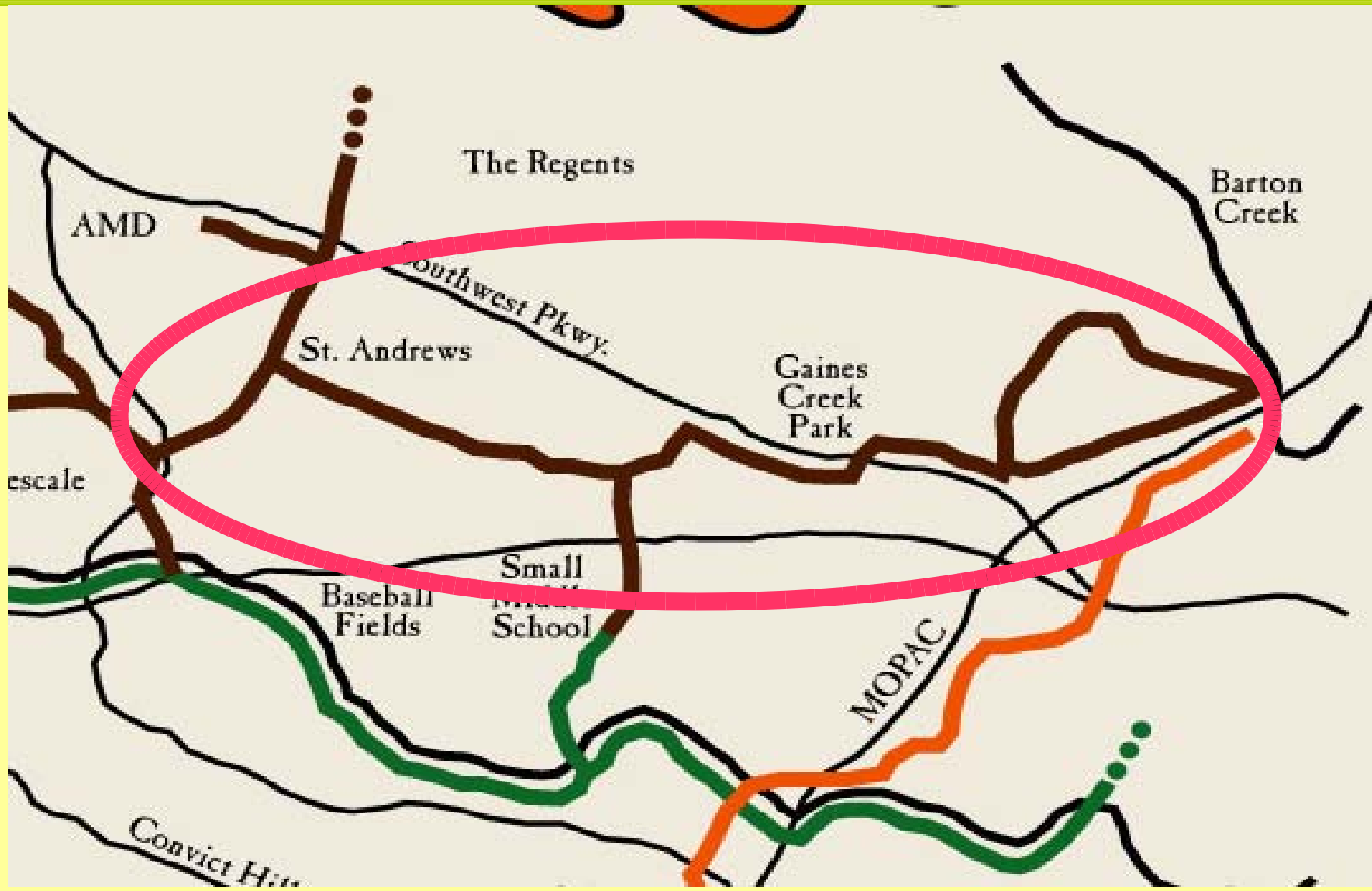
# Current Site – City ROW on the West Davis Trail



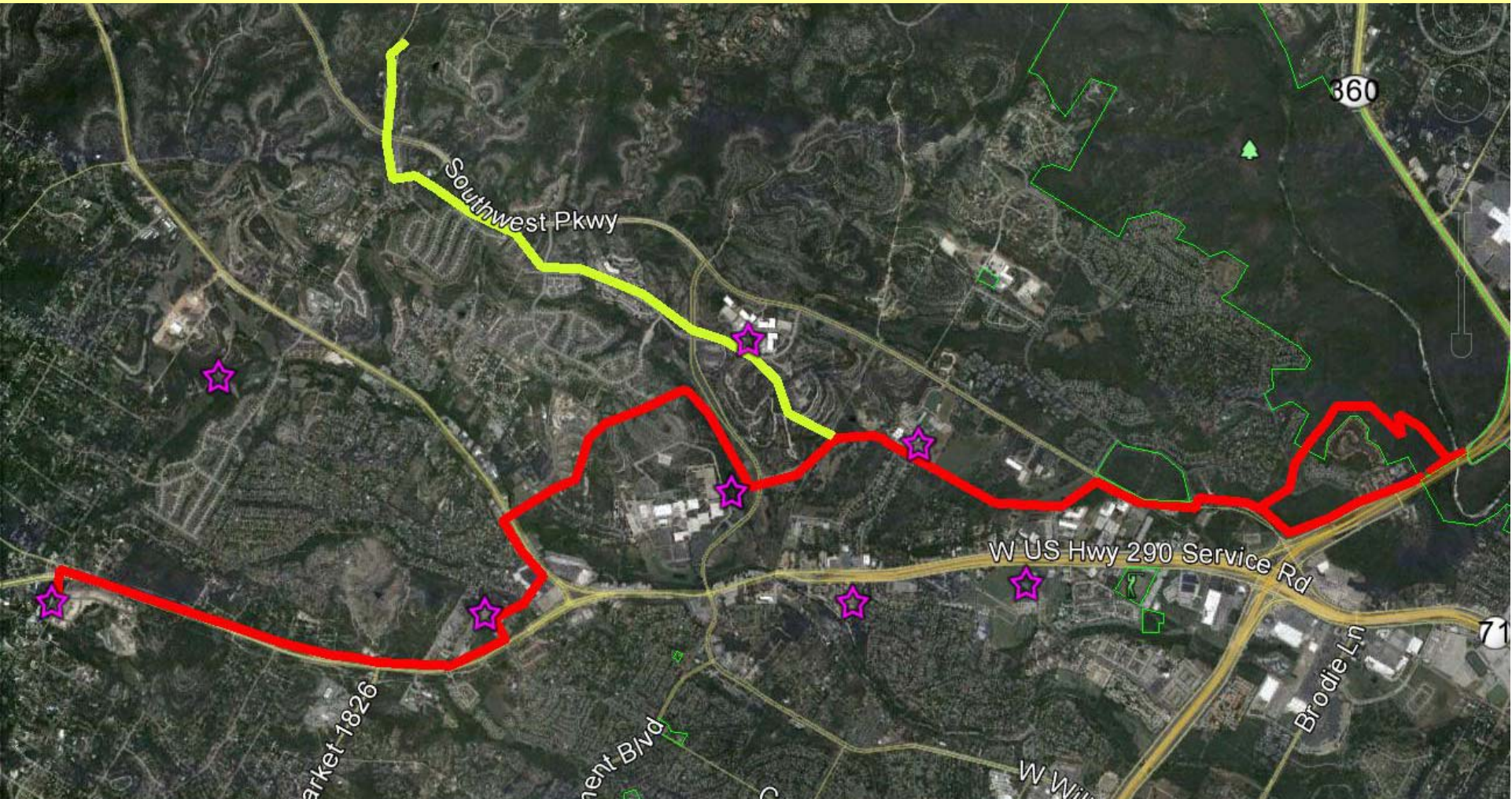
# Current Site – City ROW on the West Davis Trail



# The “Y” to Barton Creek (YBC)



# The “Y” to Barton Creek (YBC)

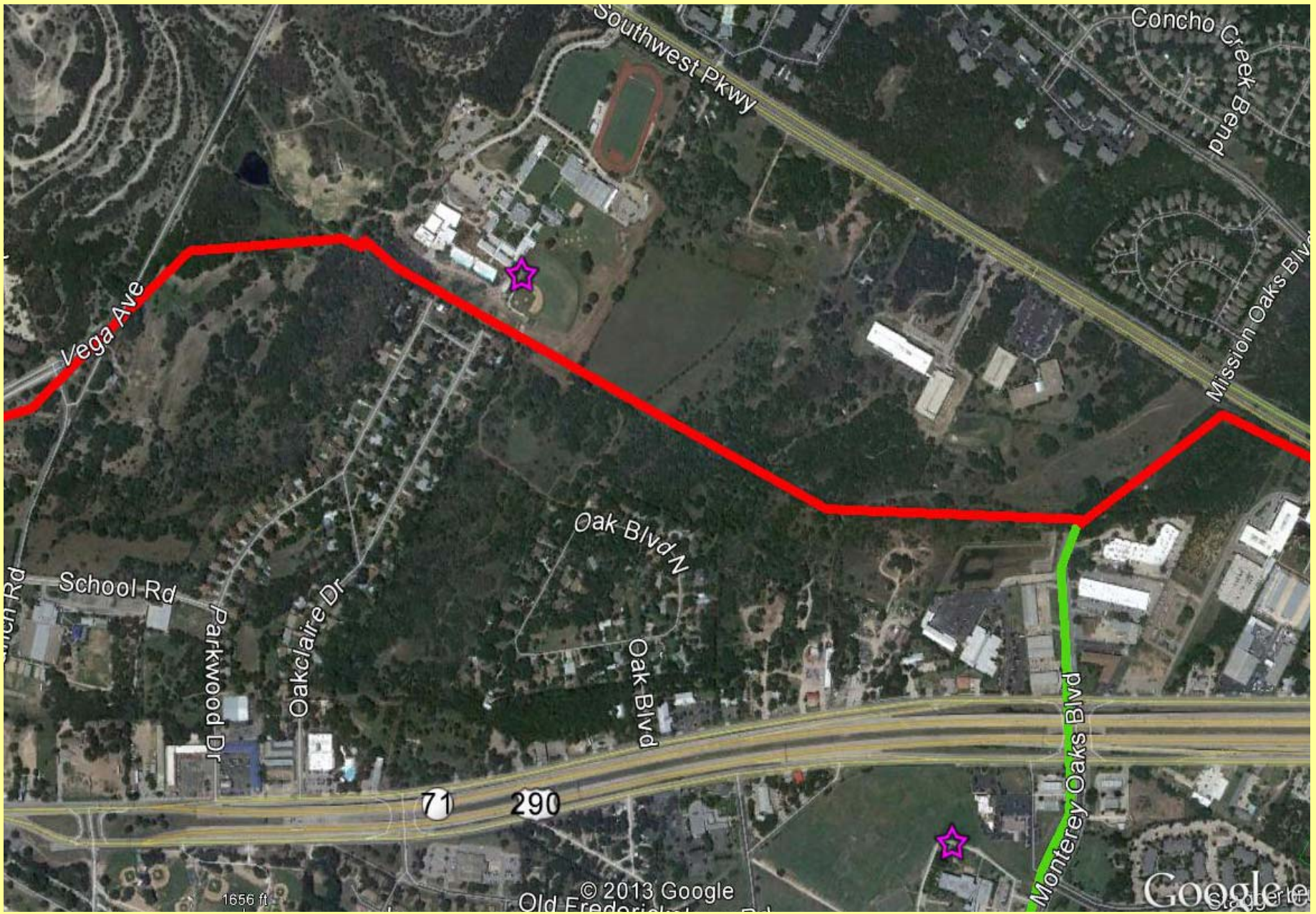


# The “Y” to Barton Creek Trail

- **Connects the new Barton Creek Bike / Pedestrian Bridge to the Y at Oak Hill and ACC**
- **Connects MoPac to SW Parkway to Industrial Oaks, possibly Park Lane, Wm Cannon, and Hwy 71**
- **Public Private Partnerships (P3) with a big section of land donated through recreational easement or conservancy**
- **Beautiful Potential for Commuter Bikes, Runners, Walkers, and Recreational Bikes**
- **Would be a Huge Asset for Oak Hill Connectivity**

# YBC Trail Scouting







**St. Andrews Property**





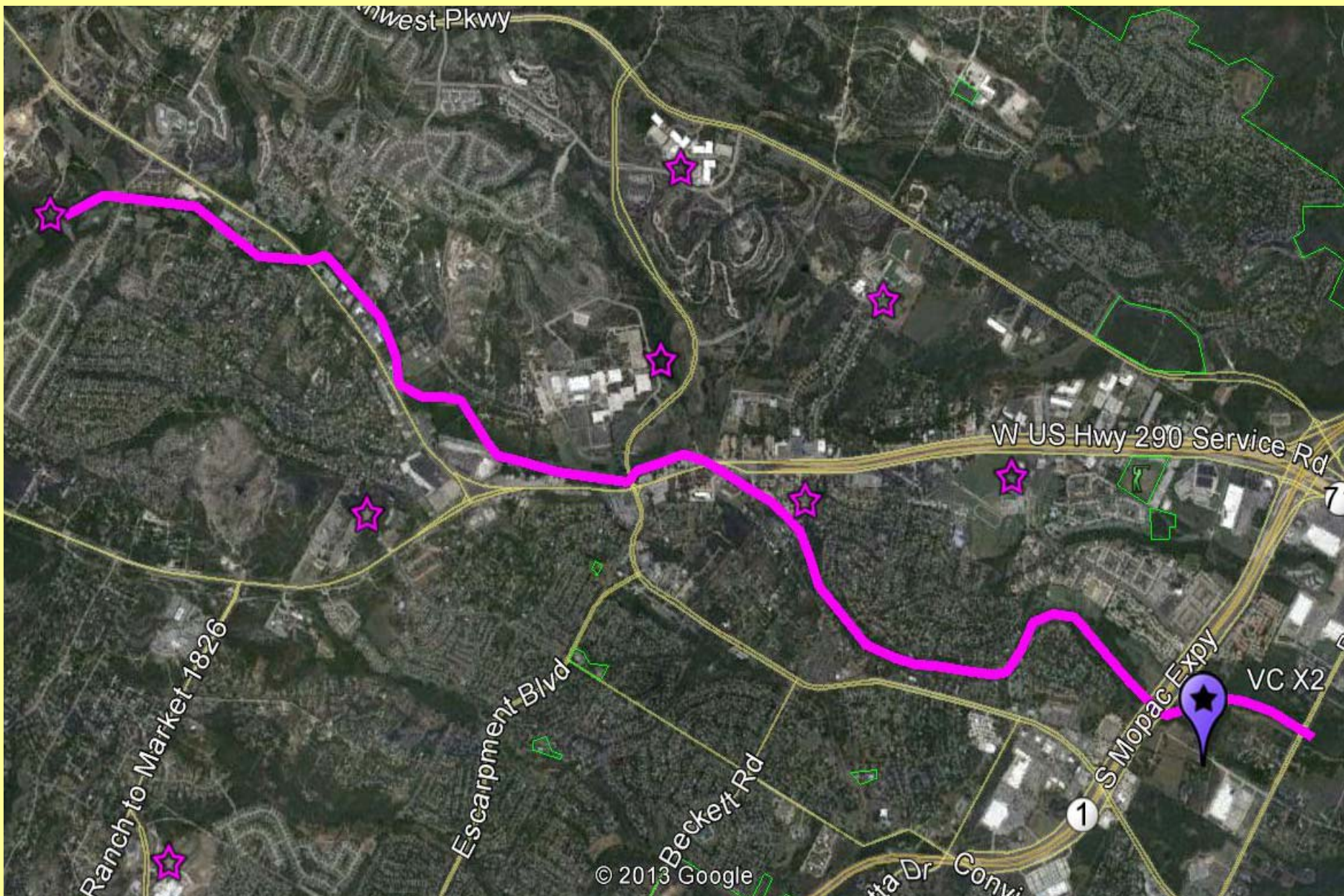
**Beautiful Landscapes**

# Wm Creek West Park Trail



# **Williamson Creek Trail (WCT)**

- **Connects the Walk For a Day Trail to Brush Country and the Y**
- **Connects MoPac to Hwy 290 and to Hwy 71**
- **Mostly Owned by City of Austin**
- **The Creek Drains Quickly**
- **Beautiful Potential for both Bikers and Runners / Walkers**



# Wm Creek West Trail



# Wm Creek West Trail



# **Along the Oak Hill Parkway Corridor – Many Opportunities**

- **YBC Commuter MUT between Barton Creek / MoPac and Hwy 290 /Hwy 71**
- **Y2Wild Commuter on FM1826**
- **Brush Country MUT between Wm Cannon and Hwy 71 / 290**
- **WCT MUT connects MoPac to Hwy 71**
- **Sooner is Better than Later !!**

## Contact Info

[www.oakhilltrails.org](http://www.oakhilltrails.org)



**oak hill trails association**