



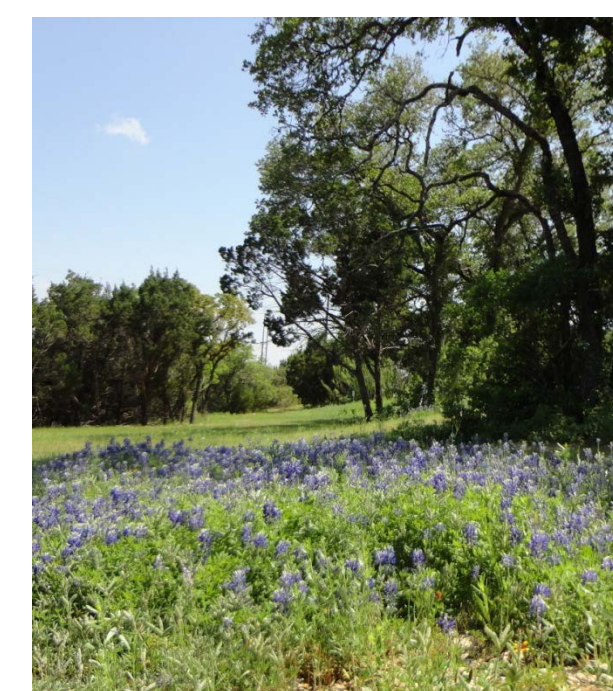
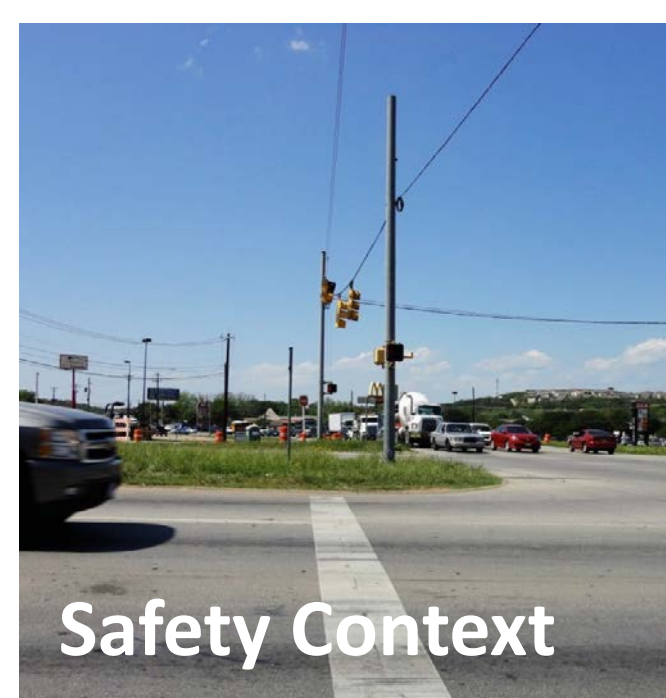
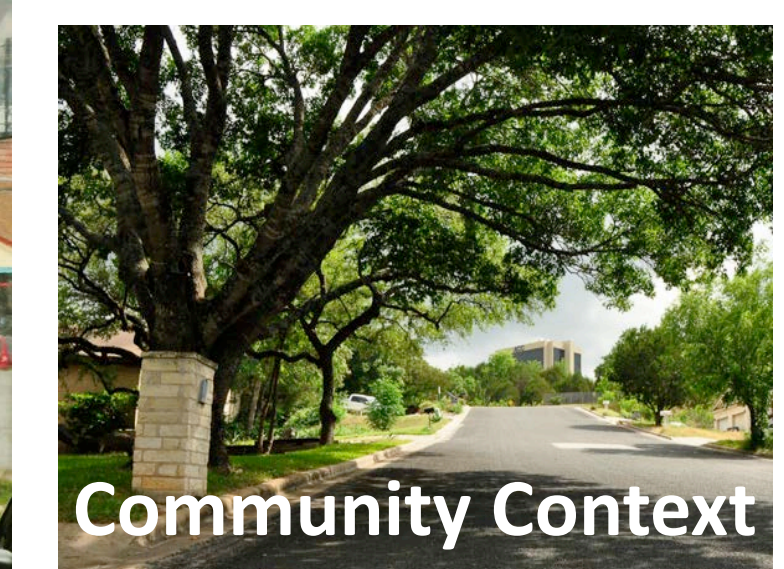
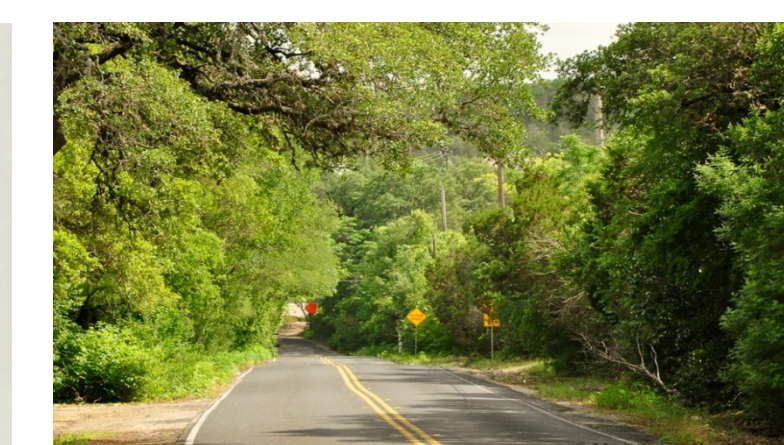
OAK HILL
PARKWAY

June 17, 2014

Context Sensitive Solutions

Context

Context Sensitive Solutions (CSS) is a collaborative approach to transportation facility design and engineering that involves all stakeholders in the process of developing a solution that is appropriate for its setting. The goals of this process are to preserve and enhance local scenic, aesthetic, historic, and environmental resources while improving transportation safety, mobility, and infrastructure.



Context Sensitive Solutions

Process

Phase 1

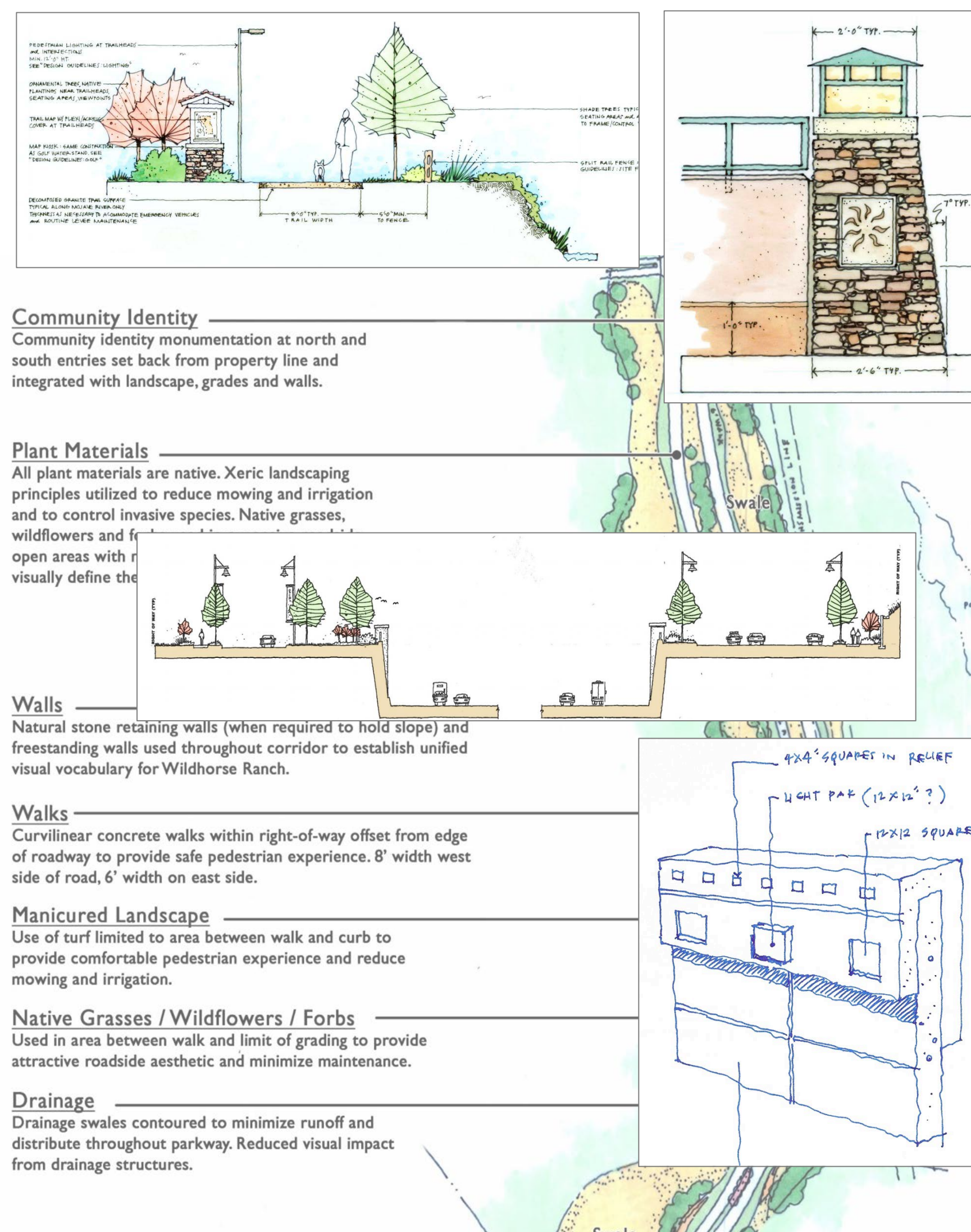
- Review Site Context & Obtain Consensus
- Review Route(s) Alternates & Potential Solutions
- Identify CSS Elements and Performance Goals
- Review Comparable Projects & Full Range of Design Options
- Prepare CSS vision



Site Analysis

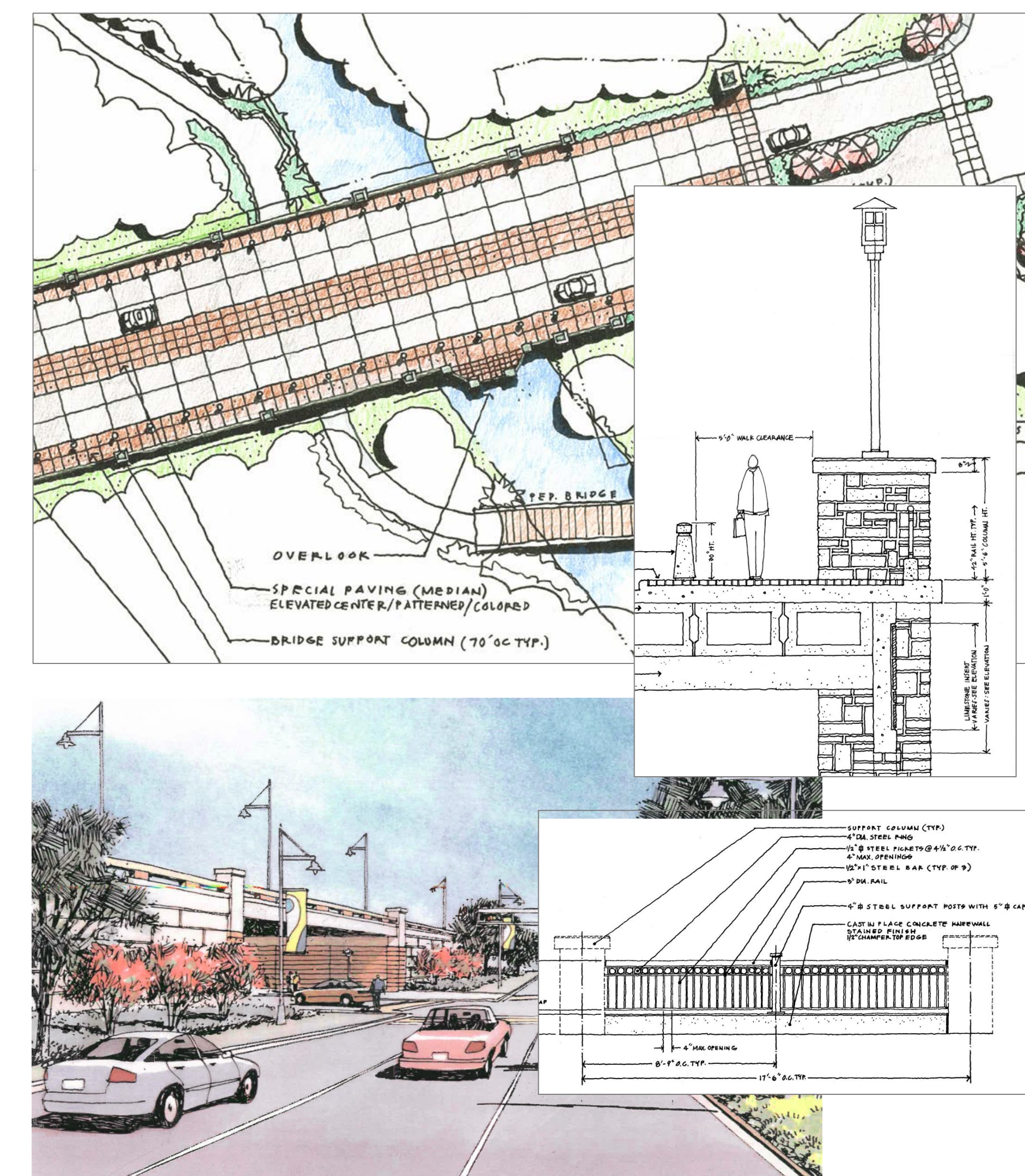
Phase 2

- Present Refined Range of Design Options
- Discuss Specific CSS Applications to Corridor
- Seek Feedback
- Confirm Consensus for Solutions to be Applied



Phase 3

- Present Final CSS Design Solutions
- Confirm Consensus for Solutions
- Identify Desired Refinements
- Review Schedule for Completion of CSS Guidelines





OAK HILL
PARKWAY

June 17, 2014

Context Sensitive Solutions

Potential Solutions

Scenic

Aesthetics

Historic

Environmental

Safety

Mobility

Infrastructure

