

# Gas Tax Facts

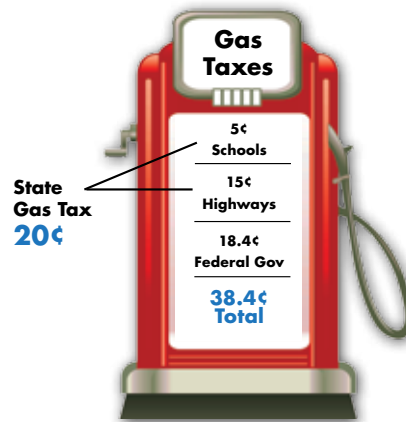
Texas Transportation and Your Fuel Tax Dollars

## How much do I pay?

Our state gas tax is 20¢ per gallon. Of this, a nickel goes to public education. The average driver pays \$9.52 a month in state fuel taxes.

When you add federal tax and state registration fees, the average Texan pays \$22 each month to use our highways.

This assumes your vehicle gets 21 miles to the gallon and you drive 12,000 miles a year.



## Monthly state fuel tax examples



**\$10.81**

**2012 Ford F-150**

18.5 miles per gallon

1,000 miles driven per month



**\$8.51**

**2012 Nissan Altima Sedan**

23.5 miles per gallon

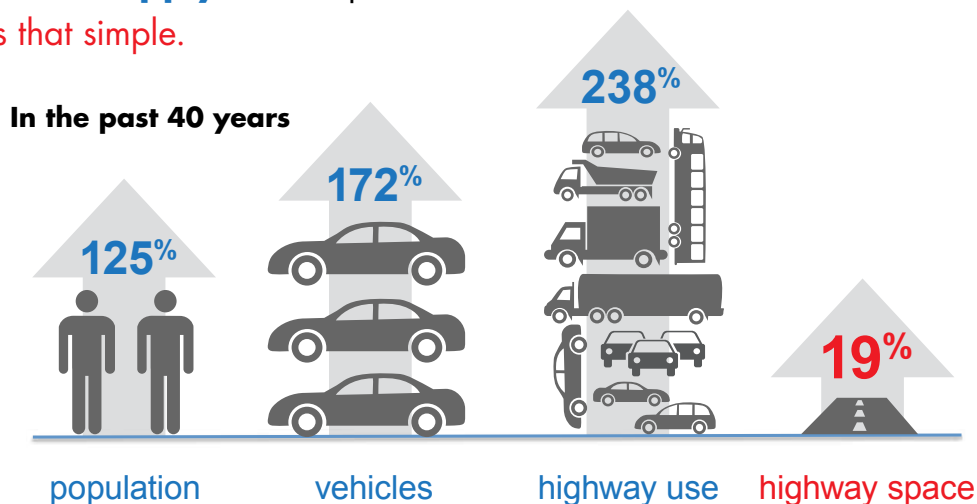
1,000 miles driven per month

## What is the problem?

The demand for roadway space has grown much faster than the supply of that space.

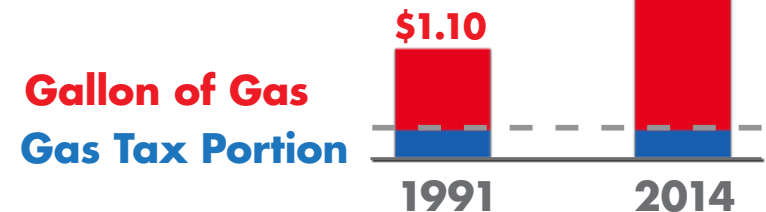
It's that simple.

The average Texan loses nearly **\$1,000** and **44 hours** every year due to traffic jams



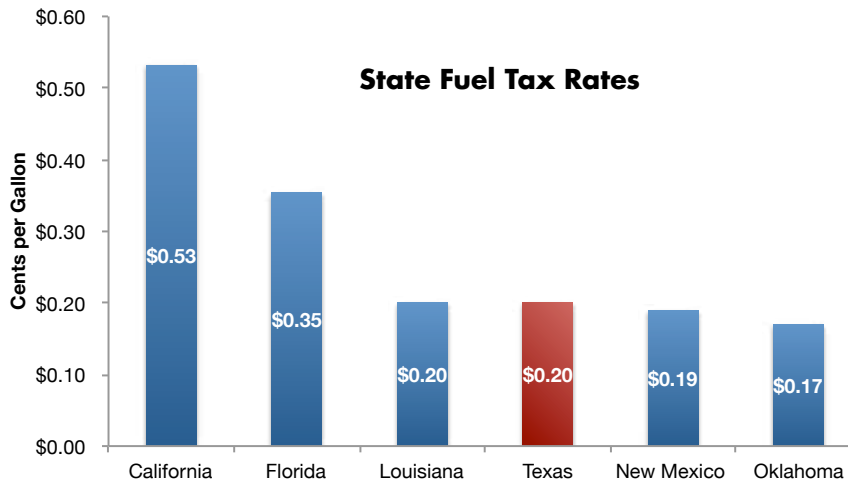
## Did you know?

While fuel costs have tripled, the gas tax — the primary way we pay for our roads — has stayed the same (since 1991).



Because of inflation, we have less and less money available to pay for roads and bridges.

## How does Texas compare to other states?



Source: American Petroleum Institute, State Motor Fuel Taxes, October 2013

## What else do I pay?

### Other monthly household expenses compared to fuel tax payments

Source: Consumer Expenditure Survey, U.S. Bureau of Labor Statistics, September, 2013



## Where does the money come from?

### Sources of State Highway Fund Revenue

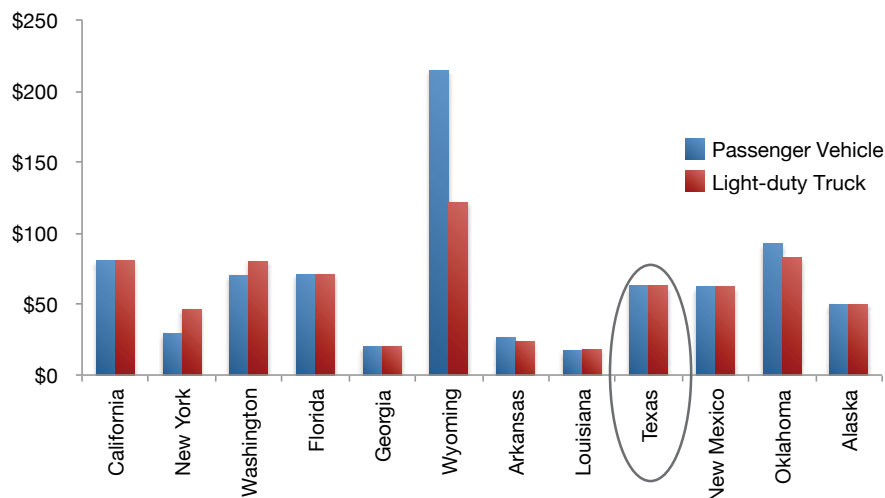
Estimate for 2014

Motor Fuel Lubricants Tax	\$43,275,000
Motor Vehicle Certificates of Title Fees	\$29,385,000
Motor Vehicle Registration Fees	\$1,390,378,000
Special Vehicle Permit Fees	\$103,850,000
Sale of Publications/Advertising	\$6,570,000
Supplies/Equipment/Services—Federal/Other	\$160,000,000
Interest on State Deposits/Investments, General Non Program	\$10,000,000
Motor Fuel Taxes	\$2,772,742,000
Other	\$96,707,000
Federal Sources	\$4,310,198,000
<b>TOTAL</b>	<b>\$8,925,182,000</b>

Source: Texas Comptroller of Public Accounts, Biennial Revenue Estimate, 2014 - 2015

## What else do I pay for in the form of fees or taxes that go to transportation?

### State Vehicle Registration Rates



## What does it cost to build?



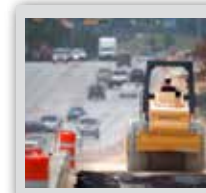
### Freeway Interchange

\$250 million



### Overpass

\$5.8 million per lane mile



### Freeway Widening

\$6.1 million per lane mile