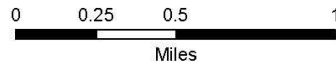
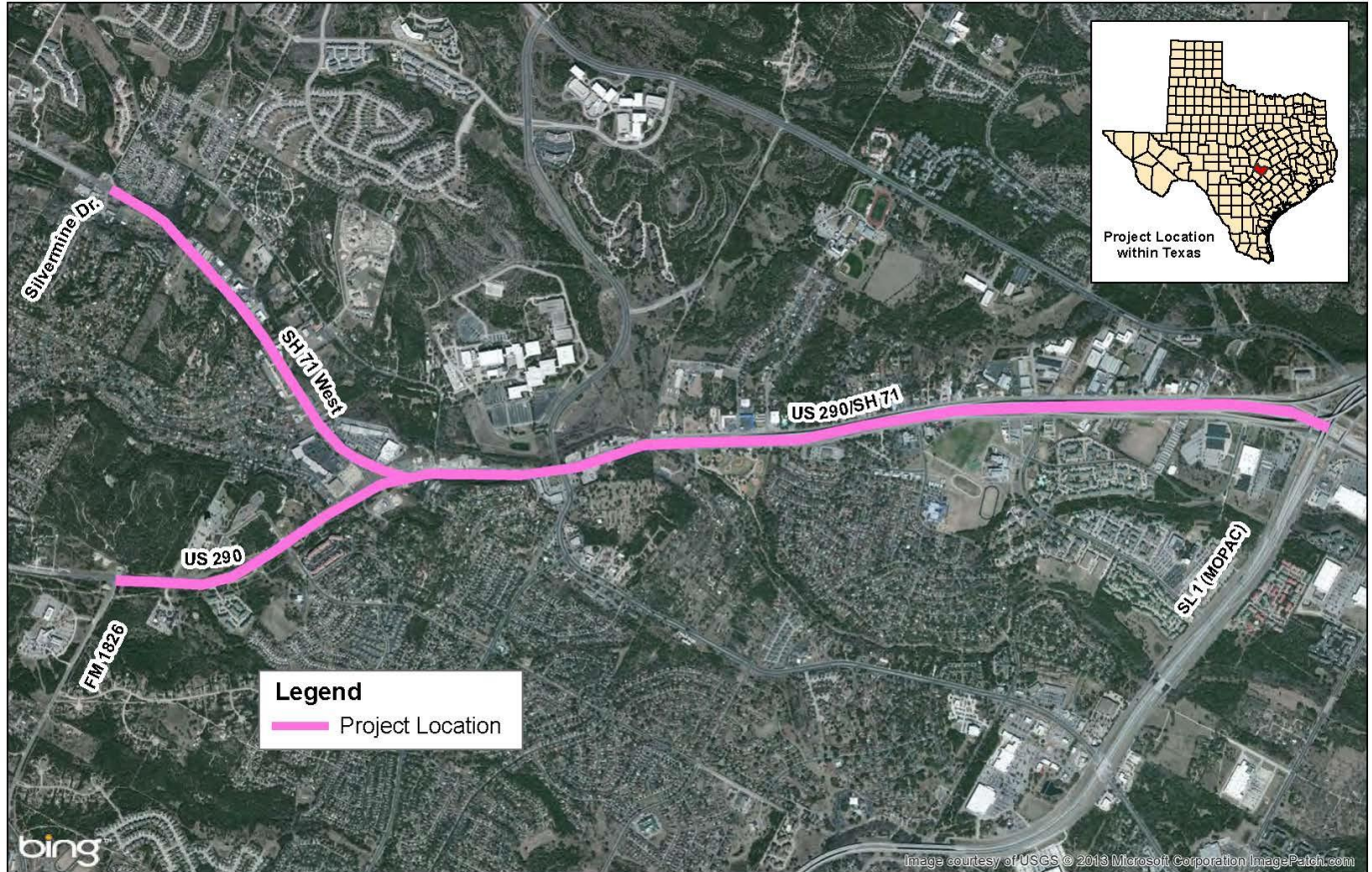




OAK HILL
PARKWAY

OAK HILL PARKWAY





OAK HILL
PARKWAY

Growth has caused the problem

- Current 290/71 configuration was constructed in the 1950s.
- From 1950 to 2011 population has grown:
 - Travis County – 560%
 - City of Austin – 520%
 - Hays County – 820%
- Population growth from 2010 to 2035 is expected to grow:
 - Travis County 50%
 - Hays County – 140%



OAK HILL
PARKWAY

Growth has caused the problem

- Increase in number of vehicles– From 1980 to 2011
 - US 290 – 198.6%
 - SH 71 – 205.6 %
- By 2035 traffic on US 290 is expected to grow by 32%



OAK HILL
PARKWAY

Purpose

What are we trying to do?

- Improve mobility and operational efficiency
- Promote long-term congestion management
- Increase multimodal travel options for people and goods
- Improve safety
- Improve emergency response



OAK HILL
PARKWAY

Need

What are we trying to solve?

- Traffic congestion related to population growth – Travis Co. has grown from 212,000 in 1960 to just over 1 million in 2010
- Crashes on US 290/ SH 71 West – 304 between 2009-2011, resulting in one fatality, nine incapacitating injuries, other injuries and property damage
- Lost time – Drivers waste more than 340,000 hours per year stuck in traffic (Texas Transportation Institute, 2011)
- Lack of reliable connectivity
- Unreliable route for transit and emergency vehicles



OAK HILL
PARKWAY

COST

- Preliminary estimate - \$650 million
- Estimates will be prepared for alternatives once the concepts have been screened and refined



OAK HILL
PARKWAY

Schedule

